

# Rat CX3CL1 protein, His tag (active)

**Cat. No. GTX00363-pro**

<b>Application</b>	Functional Assay
<b>Species</b>	Rat

**Package**  
10 µg

## APPLICATION

### Application Note

Chemokine C-X3-C-Motif Ligand 1 (CX3CL1) also known as fractalkine is a large cytokine protein of 373 amino acids, it contains multiple domains and is the only known member of the CX3C chemokine family. Soluble CX3CL1 potentially chemoattracts T cells and monocytes, while the cell-bound chemokine promotes strong adhesion of leukocytes to activated endothelial cells, where it is primarily expressed. Thus, chemotaxis assay used 24-well microchemotaxis system was undertaken to detect the chemotactic effect of CX3CL1 on the human monocytic cell line THP-1. Briefly, THP-1 cells were seeded into the upper chambers (150 µl cell suspension, 1x10<sup>6</sup> cells/ml in RPMI-1640 with FBS free) and SLC (15. 625 ng/ml, 31. 25 ng/ml, 62. 5 ng/ml and 125 ng/ml diluted separately in serum free RPMI-1640) was added in lower chamber with a polycarbonate filter (8µm pore size) used to separate the two compartments. After incubation at 37°C with 5% CO<sub>2</sub> for 1h, the filter was removed, then cells in low chamber were observed by inverted microscope at low magnification (×100) and the number of migrated cells were counted at high magnification (×400) randomly. And CX3CL1 is able to induce migration of THP-1 cells.

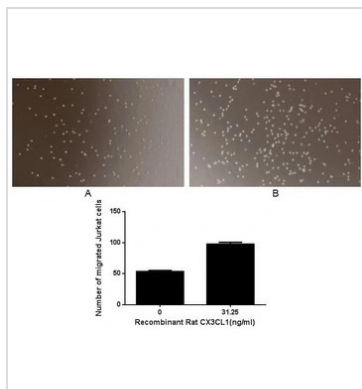
**Observed MW** 37 kDa.

## PROPERTIES

<b>Form</b>	Lyophilized powder
<b>Buffer</b>	Reconstitute with 20mM Tris and 150mM NaCl to 0.1-1.0mg/ml. Do not vortex. Lyophilized from 20mM Tris, 150mM NaCl, 1mM EDTA, 1mM DTT, 0.01% SKL, 5% Trehalose.
<b>Preservative</b>	ProClin 300
<b>Storage</b>	For short-term storage (1-2 weeks), store at 4°C. For long-term storage, store at -20°C or below. After reconstitution, keep as concentrated solution. Avoid freeze-thaw cycles.
<b>Region/Sequence</b>	N-terminal His-Tag; Gln83~Pro328 (NP_604450.1)
<b>Expression System</b>	E. coli
<b>Purity</b>	> 95%
<b>Endotoxin</b>	< 1 EU/µg
<b>Conjugation</b>	Unconjugated
<b>Note</b>	For laboratory use only. Not for any clinical, therapeutic, or diagnostic use in humans or animals. Not for animal or human consumption.



For full product information, images and publications, please visit our [website](#).

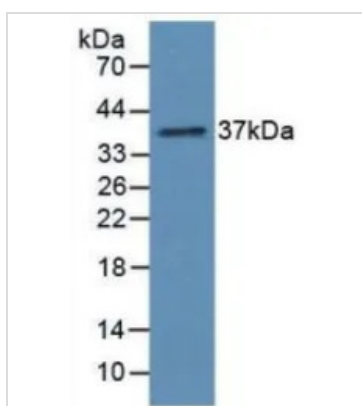
**DATA IMAGES**

**GTX00363-pro Functional Assay Image**

The chemotactic effect of GTX00363-pro Rat CX3CL1 protein (active).

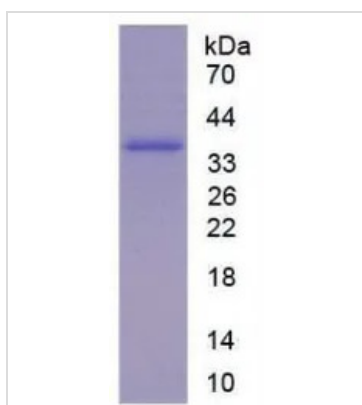
Upper: (A) THP-1 cells were seeded into the upper chambers and serum free RPMI-1640 without CX3CL1 was added in lower chamber, then cells in lower chamber were observed at low magnification ( $\times 100$ ) after incubation for 1hr.

(B) THP-1 cells were seeded into the upper chambers and serum free RPMI-1640 with 31.25 ng/ml CX3CL1 was added in lower chamber, then cells in lower chamber were observed at low magnification ( $\times 100$ ) after incubation for 1hr.

Lower: The number of migrated cells were counted at high magnification ( $\times 400$ ) randomly (five fields for each filter).


**GTX00363-pro Image**

WB analysis of GTX00363-pro Rat CX3CL1 protein (active).


**GTX00363-pro Image**

SDS-PAGE analysis of GTX00363-pro Rat CX3CL1 protein (active).



For full product information, images and publications, please visit our [website](https://www.genetex.com).