

Rat BDNF protein, His tag

Cat. No. GTX00367-pro

Applications Functional Assay**Species** Rat**Package**

10 µg

Applications

Application Note

Brain-derived neurotrophic factor, also known as BDNF is a member of the neurotrophin family of growth factors, which are related to the canonical Nerve Growth Factor. BDNF acts on certain neurons of the central nervous system and the peripheral nervous system, helping to support the survival of existing neurons, and encourage the growth and differentiation of new neurons and synapses. Besides, Amyloid Precursor Protein (APP) has been identified as an interactor of BDNF, thus a binding ELISA assay was conducted to detect the interaction of recombinant rat BDNF and recombinant rat APP. Briefly, BDNF were diluted serially in PBS, with 0.01% BSA (pH 7.4). Duplicate samples of 100 µl were then transferred to APP-coated microtiter wells and incubated for 2h at 37°C. Wells were washed with PBST and incubated for 1h with anti-BDNF pAb, then aspirated and washed 3 times. After incubation with HRP labelled secondary antibody, wells were aspirated and washed 3 times. With the addition of substrate solution, wells were incubated 15-25 minutes at 37°C. Finally, add 50 µl stop solution to the wells and read at 450nm immediately. The binding activity of BDNF and APP was in a dose dependent manner.

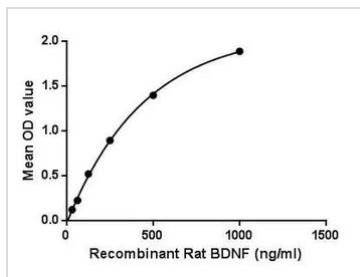
Observed MW (kDa) 17 kDa.

Properties

Form Lyophilized powder**Buffer** Reconstitute with 20mM Tris and 150mM NaCl to 0.1-1.0mg/ml. Do not vortex. Lyophilized from 20mM Tris, 150mM NaCl, 1mM EDTA, 1mM DTT, 0.01% SKL, 5% Trehalose.**Preservative** ProClin 300**Storage** For short-term storage (1-2 weeks), store at 4°C. For long-term storage, store at -20°C or below. After reconstitution, keep as concentrated solution. Avoid freeze-thaw cycles.**Region/Sequence** N-terminal His-Tag; Asn117~Gly248 (NP_001257559.1)**Expression System** E. coli**Purity** > 97%**Endotoxin** < 1 EU/µg**Conjugation** Unconjugated**Note** For laboratory use only. Not for any clinical, therapeutic, or diagnostic use in humans or animals. Not for animal or human consumption.

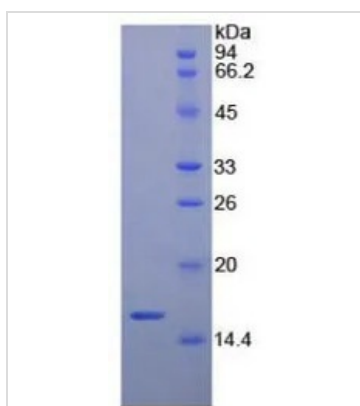
For full product information, images and publications, please visit our [website](#).

DATA IMAGES



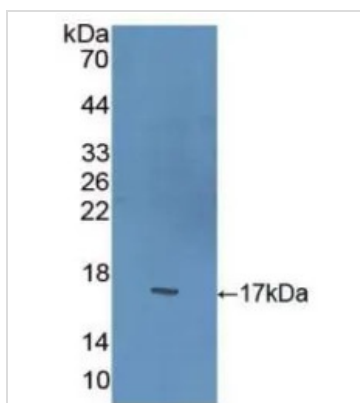
GTX00367-pro Functional Assay Image

Functional ELISA analysis of GTX00367-pro Rat BDNF protein which can bind immobilized APP protein.



GTX00367-pro Image

SDS-PAGE analysis of GTX00367-pro Rat BDNF protein.



GTX00367-pro Image

WB analysis of GTX00367-pro Rat BDNF protein.



For full product information, images and publications, please visit our [website](https://www.genetex.com).