

Rat SFTPC protein, His tag

Cat. No. GTX00370-pro

Applications Functional Assay**Species** Rat**Package**

10 µg

Applications

Application Note

Surfactant Associated Protein C (SPC) is one of the pulmonary surfactant proteins. It is a membrane protein which manufactures surfactant. The propeptide of pulmonary surfactant C has an N-terminal alpha-helical segment whose suggested function was stabilization of the protein structure, since the latter can irreversibly transform from its native alpha-helical structure to beta-sheet aggregates and form amyloid fibrils. Besides, Monokine Induced By Interferon Gamma (Mlg) has been identified as an interactor of SPC, thus a binding ELISA assay was conducted to detect the interaction of recombinant rat SPC and recombinant rat Mlg. Briefly, SPC were diluted serially in PBS, with 0.01% BSA (pH 7.4). Duplicate samples of 100 µl were then transferred to Mlg-coated microtiter wells and incubated for 2h at 37°C. Wells were washed with PBST and incubated for 1h with anti-SPC pAb, then aspirated and washed 3 times. After incubation with HRP labelled secondary antibody, wells were aspirated and washed 3 times. With the addition of substrate solution, wells were incubated 15-25 minutes at 37°C. Finally, add 50 µl stop solution to the wells and read at 450nm immediately. The binding activity of SPC and Mlg was in a dose dependent manner.

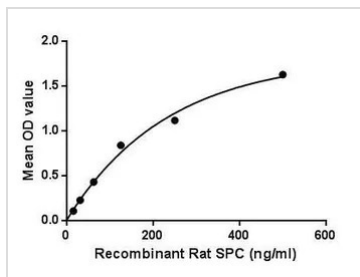
Observed MW (kDa) 14 kDa.

Properties

Form Lyophilized powder**Buffer** Reconstitute with 20mM Tris and 150mM NaCl to 0.1-1.0mg/ml. Do not vortex. Lyophilized from 20mM Tris, 150mM NaCl, 1mM EDTA, 1mM DTT, 0.01% SKL, 5% Trehalose.**Preservative** ProClin 300**Storage** For short-term storage (1-2 weeks), store at 4°C. For long-term storage, store at -20°C or below. After reconstitution, keep as concentrated solution. Avoid freeze-thaw cycles.**Region/Sequence** N-terminal His-Tag; Phe95~Ile194 (NP_059038.1)**Expression System** E. coli**Purity** > 95%**Endotoxin** < 1 EU/µg**Conjugation** Unconjugated**Note** For laboratory use only. Not for any clinical, therapeutic, or diagnostic use in humans or animals. Not for animal or human consumption.

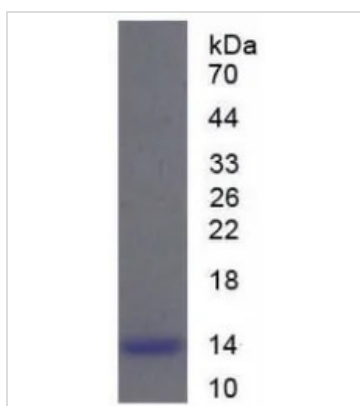
For full product information, images and publications, please visit our [website](#).

DATA IMAGES



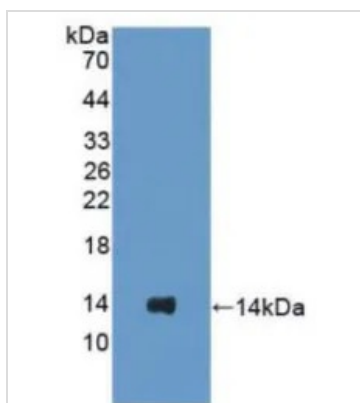
GTX00370-pro Functional Assay Image

Functional ELISA analysis of GTX00370-pro Rat SFTPC protein which can bind immobilized Mlg protein.



GTX00370-pro Image

SDS-PAGE analysis of GTX00370-pro Rat SFTPC protein.



GTX00370-pro Image

WB analysis of GTX00370-pro Rat SFTPC protein.



For full product information, images and publications, please visit our [website](https://www.genetex.com).