

Human MCP1 / CCL2 protein, His tag (active)

Cat. No. GTX00415-pro**Applications** Functional Assay**Species** Human**Package**

10 µg

Applications

Application Note

MCP-1 (monocyte chemoattractant protein 1), also known as CCL2 (C-C motif chemokine 2), is a small cytokine that belongs to the CC chemokine family. MCP-1 has been described as a chemoattractant for monocytes and proven to be able to induce chemotactic migration of THP-1 cells. Therefore, chemotaxis assay used 24-well microchemotaxis system was undertaken to detect the chemotactic effect of MCP-1 on the human monocytic cell line THP-1. Briefly, THP-1 cells were seeded into the upper chambers (100 µl cell suspension, 10⁶ cells/ml in RPMI-1640 with 0.5% FBS) and MCP-1 (25 and 50 ng/ml diluted separately in serum free RPMI-1640) was added in lower chamber with a polycarbonate filter (8 µm pore size) used to separate the two compartments. After incubation at 37°C with 5% CO₂ for 3h, the filter was removed, then cells in low chamber were observed by inverted microscope at low magnification (×100) and the number of migrated cells were counted at high magnification (×400) randomly (five fields for each filter). MCP-1 is able to induce migration of THP-1 cells, and the optimum chemotactic concentration of MCP-1 is about 25 ng/ml.

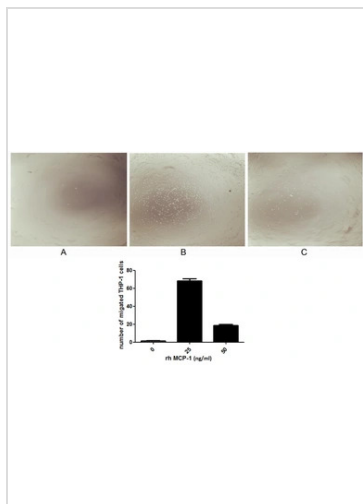
Observed MW (kDa) 15/17 kDa.

Properties

Form Lyophilized powder**Buffer** Reconstitute with 20mM Tris (pH8.0) and 150mM NaCl to 0.1-1.0mg/ml. Do not vortex. Lyophilized from 20mM Tris (pH8.0), 150mM NaCl, 1mM EDTA, 1mM DTT, 0.01% SKL, 5% Trehalose.**Preservative** ProClin 300**Storage** For short-term storage (1-2 weeks), store at 4°C. For long-term storage, store at -20°C or below. After reconstitution, keep as concentrated solution. Avoid freeze-thaw cycles.**Region/Sequence** N-terminal His-Tag; Gln24~Thr99 (NP_002973.1)**Expression System** E. coli**Purity** > 90%**Endotoxin** < 1 EU/µg**Conjugation** Unconjugated**Note** For laboratory use only. Not for any clinical, therapeutic, or diagnostic use in humans or animals. Not for animal or human consumption.

For full product information, images and publications, please visit our [website](#).

DATA IMAGES



GTX00415-pro Functional Assay Image

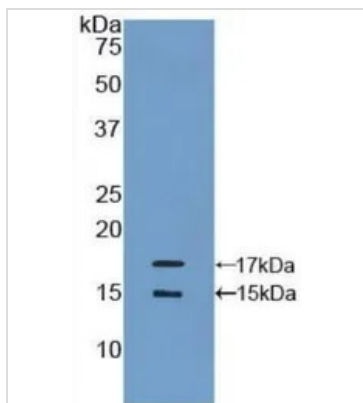
The chemotactic effect of GTX00415-pro Human MCP1 / CCL2 protein (active).

Upper: (A) THP-1 cells were seeded into the upper chambers and serum free RPMI-1640 without MCP-1 was added in lower chamber, then cells in lower chamber were observed at low magnification ($\times 100$) after incubation for 3hrs.

(B) THP-1 cells were seeded into the upper chambers and serum free RPMI-1640 with 25 ng/ml MCP-1 was added in lower chamber, then cells in lower chamber were observed at low magnification ($\times 100$) after incubation for 3hrs.

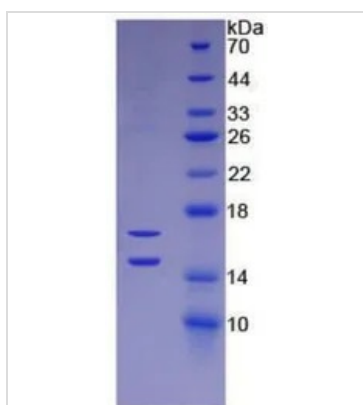
(C) THP-1 cells were seeded into the upper chambers and serum free RPMI-1640 with 50 ng/ml MCP-1 was added in lower chamber, then cells in lower chamber were observed at low magnification ($\times 100$) after incubation for 3hrs.

Lower: The number of migrated cells were counted at high magnification ($\times 400$) randomly (five fields for each filter).



GTX00415-pro Image

WB analysis of GTX00415-pro Human MCP1 / CCL2 protein (active).



GTX00415-pro Image

SDS-PAGE analysis of GTX00415-pro Human MCP1 / CCL2 protein (active).



For full product information, images and publications, please visit our [website](#).