

## Human Plasminogen protein, His tag

Cat. No. GTX00419-pro

**Applications** Functional Assay**Species** Human**Package**

10 µg

## Applications

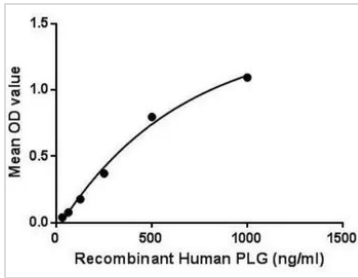
## Application Note

Plasminogen (PLG) as a zymogen releases plasmin from the liver into the systemic circulation. Plasmin is a serine protease that acts to dissolve fibrin blood clots. Apart from fibrinolysis, plasmin proteolyzes proteins in various other systems: It activates collagenases, some mediators of the complement system and weakens the wall of the Graafian follicle (leading to ovulation). It cleaves fibrin, fibronectin, thrombospondin, laminin, and von Willebrand factor. Plasmin, like trypsin, belongs to the family of serine proteases. Besides, Insulin Like Growth Factor Binding Protein 3 (IGFBP3) has been identified as an interactor of PLG, thus a binding ELISA assay was conducted to detect the interaction of recombinant human PLG and recombinant human IGFBP3. Briefly, PLG were diluted serially in PBS, with 0.01% BSA (pH 7.4). Duplicate samples of 100 µl were then transferred to IGFBP3-coated microtiter wells and incubated for 2h at 37°C. Wells were washed with PBST and incubated for 1h with anti-PLG pAb, then aspirated and washed 3 times. After incubation with HRP labelled secondary antibody, wells were aspirated and washed 3 times. With the addition of substrate solution, wells were incubated 15-25 minutes at 37°C. Finally, add 50 µl stop solution to the wells and read at 450nm immediately. The binding activity of PLG and IGFBP3 was in a dose dependent manner.

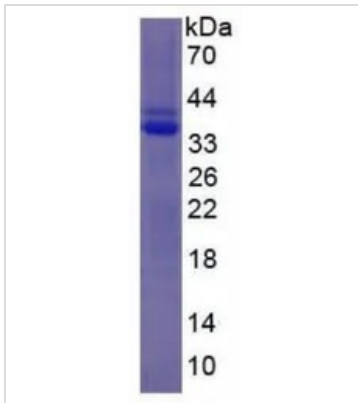
**Observed MW (kDa)** 35 kDa.

## Properties

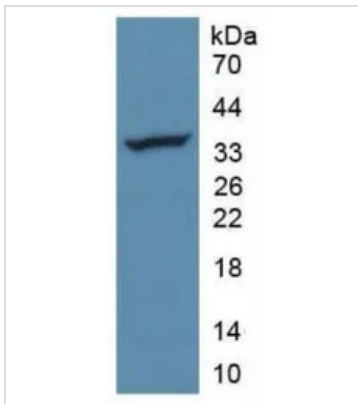
**Form** Lyophilized powder**Buffer** Reconstitute with 20mM Tris (pH8.0) and 150mM NaCl to 0.1-1.0mg/ml. Do not vortex. Lyophilized from 20mM Tris (pH8.0), 150mM NaCl, 1mM EDTA, 1mM DTT, 0.01% SKL, 5% Trehalose.**Preservative** ProClin 300**Storage** For short-term storage (1-2 weeks), store at 4°C. For long-term storage, store at -20°C or below. After reconstitution, keep as concentrated solution. Avoid freeze-thaw cycles.**Region/Sequence** N-terminal His-Tag; Leu100~Cys352 (NP\_000292.1)**Expression System** Yeast**Purity** > 95%**Endotoxin** < 1 EU/µg**Conjugation** Unconjugated**Note** For laboratory use only. Not for any clinical, therapeutic, or diagnostic use in humans or animals. Not for animal or human consumption.For full product information, images and publications, please visit our [website](#).

**DATA IMAGES**

**GTx00419-pro Functional Assay Image**

Functional ELISA analysis of GTx00419-pro Human Plasminogen protein which can bind immobilized IGFBP3 protein.


**GTx00419-pro Image**

SDS-PAGE analysis of GTx00419-pro Human Plasminogen protein.


**GTx00419-pro Image**

WB analysis of GTx00419-pro Human Plasminogen protein.



For full product information, images and publications, please visit our [website](https://www.genetex.com).