

## Human Amphiregulin protein, His and GST tag

Cat. No. GTX00421-pro

**Applications** Functional Assay**Species** Human**Package**

10 µg

## Applications

## Application Note

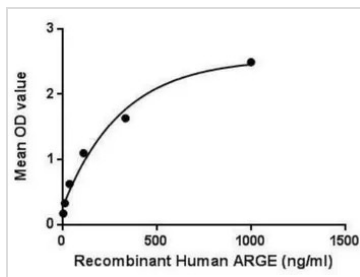
Amphiregulin, also known as AREG, is an autocrine growth factor as well as a mitogen for astrocytes, Schwann cells, fibroblasts. It is related to epidermal growth factor (EGF) and transforming growth factor alpha (TGF- $\alpha$ ). This protein interacts with the Epidermal growth factor receptor (EGFR) to promote the growth of normal epithelial cells. Besides, Epidermal Growth Factor Receptor (EGFR) has been identified as an interactor of ARGE, thus a binding ELISA assay was conducted to detect the interaction of recombinant human ARGE and recombinant human EGFR. Briefly, ARGE were diluted serially in PBS, with 0.01% BSA (pH 7.4). Duplicate samples of 100 µl were then transferred to EGFR-coated microtiter wells and incubated for 2h at 37°C. Wells were washed with PBST and incubated for 1h with anti-ARGE pAb, then aspirated and washed 3 times. After incubation with HRP labelled secondary antibody, wells were aspirated and washed 3 times. With the addition of substrate solution, wells were incubated 15-25 minutes at 37°C. Finally, add 50 µl stop solution to the wells and read at 450nm immediately. The binding activity of ARGE and EGFR was in a dose dependent manner.

**Observed MW (kDa)** 44 kDa.

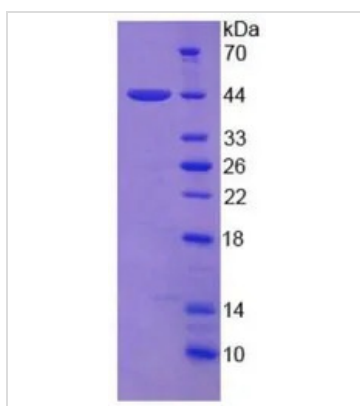
## Properties

**Form** Lyophilized powder**Buffer** Reconstitute with 20mM Tris (pH8.0) and 150mM NaCl to 0.1-1.0mg/ml. Do not vortex. Lyophilized from 20mM Tris (pH8.0), 150mM NaCl, 1mM EDTA, 1mM DTT, 0.01% SKL, 5% Trehalose.**Preservative** ProClin 300**Storage** For short-term storage (1-2 weeks), store at 4°C. For long-term storage, store at -20°C or below. After reconstitution, keep as concentrated solution. Avoid freeze-thaw cycles.**Region/Sequence** N-terminal His-Tag and GST-Tag; Ser20~Asp100 (NP\_001648.1)**Expression System** E. coli**Purity** > 90%**Endotoxin** < 1 EU/µg**Conjugation** Unconjugated**Note** For laboratory use only. Not for any clinical, therapeutic, or diagnostic use in humans or animals. Not for animal or human consumption.

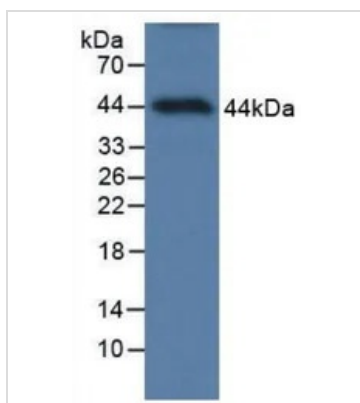
For full product information, images and publications, please visit our [website](#).

**DATA IMAGES**

**GTX00421-pro Functional Assay Image**

Functional ELISA analysis of GTX00421-pro Human Amphiregulin protein which can bind immobilized EGFR protein.


**GTX00421-pro Image**

SDS-PAGE analysis of GTX00421-pro Human Amphiregulin protein.


**GTX00421-pro Image**

WB analysis of GTX00421-pro Human Amphiregulin protein.



For full product information, images and publications, please visit our [website](https://www.genetex.com).