

Human AHA-1 protein (active)

Cat. No. GTX00426-pro

Application Functional Assay

Species Human

Package

50 µg

APPLICATION

Application Note

2 µM AHA1 Protein generated a 9-fold ATPase activation of 2 µM HSP90 (His-tagged HSP90 beta) in 33 mM HEPES (pH 7.2) with 30 mM NaCl, 5 mM MgCl₂, 1 mM DTT, 1.5 mM ATP in a 100 µl reaction at 37 °C. (This is an enzyme-linked ATP regeneration assay tracking loss of NADH absorbance at 340nm.)

Observed MW 38 kDa.

PROPERTIES

Form Liquid

Buffer 20mM HEPES, 80mM NaCl, 10% Glycerol

Preservative No preservative

Storage Store as concentrated solution. Aliquot and store at -20°C or below. Avoid freeze-thaw cycles.

Concentration Batch dependent

Region/Sequence Full-length protein; NP_036243.1 with N-terminal SH residue

Expression System E. coli

Purification Multi-Step Purified

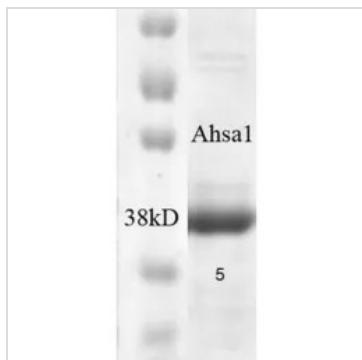
Purity > 90%

Conjugation Unconjugated

Note For laboratory use only. Not for any clinical, therapeutic, or diagnostic use in humans or animals. Not for animal or human consumption.



For full product information, images and publications, please visit our [website](#).

DATA IMAGES

GTX00426-pro Image

SDS-PAGE analysis of GTX00426-pro Human AHA-1 protein (active).



For full product information, images and publications, please visit our [website](#).