

# Human AHA-1 protein, His tag (active)

**Cat. No. GTX00427-pro**

**Application** Functional Assay

**Species** Human

**Package**

50 µg

## APPLICATION

### Application Note

2 µM AHA1 Protein generated a 9-fold ATPase activation of 2 µM HSP90 (His-tagged HSP90 beta) in 33 mM HEPES (pH 7.2) with 30 mM NaCl, 5 mM MgCl<sub>2</sub>, 1 mM DTT, 1.5 mM ATP in a 100 µl reaction at 37 °C. (This is an enzyme-linked ATP regeneration assay tracking loss of NADH absorbance at 340nm.)

**Observed MW** 39 kDa.

## PROPERTIES

**Form** Liquid

**Buffer** 20mM HEPES, 80mM NaCl, 10% Glycerol

**Preservative** No preservative

**Storage** Store as concentrated solution. Aliquot and store at -20°C or below. Avoid freeze-thaw cycles.

**Concentration** Batch dependent (Please refer to the vial label for the specific concentration.)

**Region/Sequence** Full-length protein with His-Tag; NP\_036243.1 with N-terminal SH residue

**Expression System** E. coli

**Purification** Affinity Purified

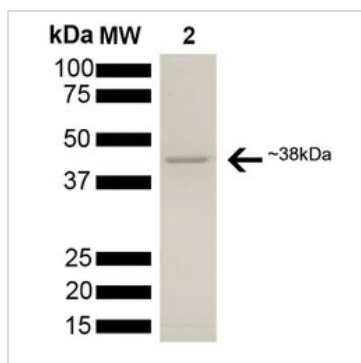
**Purity** > 90%

**Conjugation** Unconjugated

**Note** For laboratory use only. Not for any clinical, therapeutic, or diagnostic use in humans or animals. Not for animal or human consumption.



For full product information, images and publications, please visit our [website](#).

**DATA IMAGES**

**GTX00427-pro Image**

SDS-PAGE analysis of GTX00427-pro Human AHA-1 protein (active).



For full product information, images and publications, please visit our [website](https://www.genetex.com).