

Mouse AHA-1 protein, His tag (active)

Cat. No. GTX00428-pro

Applications Functional Assay**Species** Mouse**Package**

50 µg

Applications

Application Note

2 µM AHA1 Protein generated a 9-fold ATPase activation of 2 µM HSP90 (His-tagged HSP90 beta) in 33 mM HEPES (pH 7.2) with 30 mM NaCl, 5 mM MgCl₂, 1 mM DTT, 1.5 mM ATP in a 100 µl reaction at 37 °C. (This is an enzyme-linked ATP regeneration assay tracking loss of NADH absorbance at 340nm.)

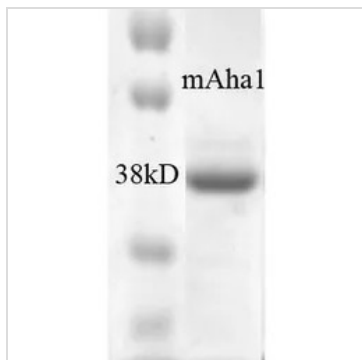
Observed MW (kDa) 38 kDa.

Properties

Form Liquid**Buffer** 25mM HEPES, 100mM KoAc, 50% Glycerol**Preservative** No preservatives**Storage** Store as concentrated solution. Aliquot and store at -20°C or below. Avoid freeze-thaw cycles.**Concentration** Batch dependent (Please refer to the vial label for the specific concentration.)**Region/Sequence** Full-length protein, N-terminal His-Tag; NP_666148.1**Expression System** E. coli**Purification** Affinity Purified**Purity** > 90%**Conjugation** Unconjugated**Note** For laboratory use only. Not for any clinical, therapeutic, or diagnostic use in humans or animals. Not for animal or human consumption.

For full product information, images and publications, please visit our [website](#).

DATA IMAGES



GTX00428-pro Image

SDS-PAGE analysis of GTX00428-pro Mouse AHA-1 protein (active).



For full product information, images and publications, please visit our [website](#).