

Human CDC37 protein, His tag

Cat. No. GTX00432-pro

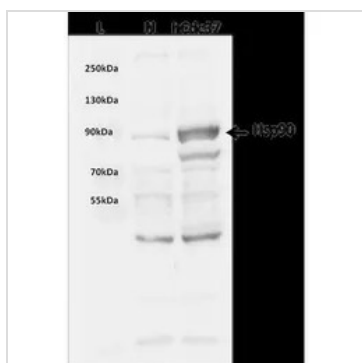
Species Human**Package**

50 µg

PROPERTIES

| | |
|--------------------------|--|
| Form | Liquid |
| Buffer | 25mM Tris, 150mM NaCl, 50% Glycerol, 0.1mM DTT |
| Preservative | No preservative |
| Storage | Store as concentrated solution. Aliquot and store at -20°C or below. Avoid freeze-thaw cycles. |
| Concentration | Batch dependent (Please refer to the vial label for the specific concentration.) |
| Region/Sequence | Full-length protein, N-terminal His-Tag; NP_008996.1 |
| Expression System | E. coli |
| Purification | Affinity Purified |
| Purity | > 90% |
| Conjugation | Unconjugated |
| Note | For laboratory use only. Not for any clinical, therapeutic, or diagnostic use in humans or animals. Not for animal or human consumption. |

DATA IMAGES



GTX00432-pro Image

SDS-PAGE analysis of GTX00432-pro Human CDC37 protein.



For full product information, images and publications, please visit our [website](#).