

Human Grp78 protein

Cat. No. GTX00435-pro**Species** Human**Package**

50 µg

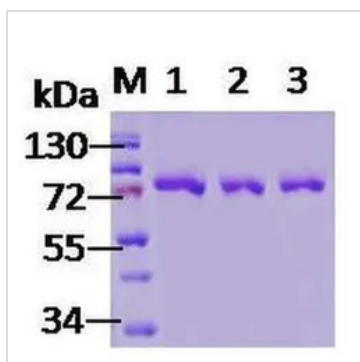
Applications

Observed MW (kDa) 78 kDa.

Properties

Form Liquid**Buffer** 20mM Tris-HCl, 450mM NaCl, 10% Glycerol, 0.5mM DTT**Preservative** No preservative**Storage** Store as concentrated solution. Aliquot and store at -20°C or below. Avoid freeze-thaw cycles.**Concentration** Batch dependent (Please refer to the vial label for the specific concentration.)**Region/Sequence** Full-length protein without any tag; NP_005338.1**Expression System** E. coli**Purification** Affinity Purified**Purity** > 90%**Conjugation** Unconjugated**Note** For laboratory use only. Not for any clinical, therapeutic, or diagnostic use in humans or animals. Not for animal or human consumption.

DATA IMAGES

**GTX00435-pro Image**

SDS-PAGE analysis of GTX00435-pro Human Grp78 protein.

For full product information, images and publications, please visit our [website](https://www.genetex.com).