

Human p23 protein (active)

Cat. No. GTX00443-pro

Applications Functional Assay

Species Human

Package

50 µg

Applications

Application Note

4 µM p23 Protein, when added to 2 µM AHA1 Protein (Aha1)-activated HSP90 (2 µM; His-tagged HSP90 beta) in 33 mM HEPES (pH 7.2) with 30 mM NaCl, 5 mM MgCl₂, 1 mM DTT, 1.5 mM ATP in a 100 µl reaction at 37 °C, eliminated all Aha1-mediated ATPase stimulation as well as intrinsic HSP90 ATPase activity. (This is an enzyme-linked ATP regeneration assay tracking loss of NADH absorbance at 340nm).

Observed MW (kDa) 23 kDa.

Properties

Form Liquid

Buffer 20mM HEPES, 80mM NaCl, 10% Glycerol

Preservative No preservatives

Storage Store as concentrated solution. Aliquot and store at -20°C or below. Avoid freeze-thaw cycles.

Concentration Batch dependent (Please refer to the vial label for the specific concentration.)

Region/Sequence Full-length protein; NP_006592.3 with N-terminal SH residue

Expression System E. coli

Purification Affinity Purified

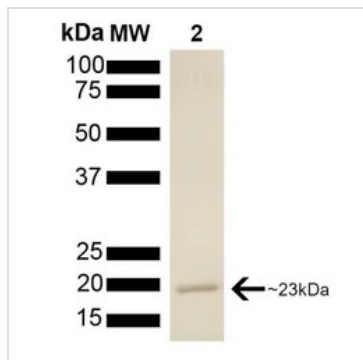
Purity > 90%

Conjugation Unconjugated

Note For laboratory use only. Not for any clinical, therapeutic, or diagnostic use in humans or animals. Not for animal or human consumption.



For full product information, images and publications, please visit our [website](#).

DATA IMAGES

GTX00443-pro Image

SDS-PAGE analysis of GTX00443-pro Human p23 protein (active).



For full product information, images and publications, please visit our [website](https://www.genetex.com).