

Human Hsp70 protein, His tag (active)

Cat. No. GTX00446-pro

Applications Functional Assay**Species** Human**Package**

50 µg

Applications

Application Note

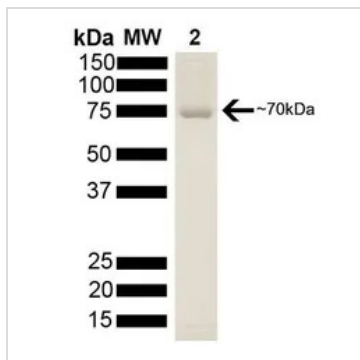
The protein has ATPase activity at the time of manufacture of 3.3 µM phosphate liberated/hr/µg protein in a 200 µl reaction at 37°C (pH 7.5) in the presence of 20 µl of 1 mM ATP using a Malachite Green assay.

Observed MW (kDa) 70 kDa.

Properties

Form Liquid**Buffer** 20mM Na-Phosphate, 150mM NaCl, 10% Glycerol, 200mM Imidazole**Preservative** No preservative**Storage** Store as concentrated solution. Aliquot and store at -20°C or below. Avoid freeze-thaw cycles.**Concentration** Batch dependent (Please refer to the vial label for the specific concentration.)**Region/Sequence** Full-length protein, His-Tag; NP_005336.3**Expression System** E. coli**Purification** Affinity Purified**Purity** > 90%**Conjugation** Unconjugated**Note** For laboratory use only. Not for any clinical, therapeutic, or diagnostic use in humans or animals. Not for animal or human consumption.

For full product information, images and publications, please visit our [website](#).

DATA IMAGES

GTX00446-pro Image

SDS-PAGE analysis of GTX00446-pro Human Hsp70 protein (active).



For full product information, images and publications, please visit our [website](https://www.genetex.com).