

# Syndecan-1 / CD138 antibody [1A3H4]

**Cat. No. GTX00451**

<b>Host</b>	Mouse
<b>Clonality</b>	Monoclonal
<b>Isotype</b>	IgG1
<b>Applications</b>	WB, ICC/IF, IHC-P, FCM, ELISA
<b>Reactivity</b>	Human, Mouse

References ( 1 )

Package

100 µl

## Applications

### Application Note

\*Optimal dilutions/concentrations should be determined by the researcher.

Suggested dilution	Recommended dilution
WB	1:200-1:1000
ICC/IF	1:200-1:1000
IHC-P	1:200-1:1000
FCM	1:200-1:400
ELISA	1:10000

Not tested in other applications.

**Calculated MW** 32 kDa. ( [Note](#) )

## Properties

<b>Form</b>	Liquid
<b>Buffer</b>	PBS
<b>Preservative</b>	0.05% Sodium azide
<b>Storage</b>	Store as concentrated solution. Centrifuge briefly prior to opening vial. For short-term storage (1-2 weeks), store at 4°C. For long-term storage, aliquot and store at -20°C or below. Avoid multiple freeze-thaw cycles.
<b>Concentration</b>	Batch dependent (Please refer to the vial label for the specific concentration.)
<b>Immunogen</b>	A recombinant fragment of human SDC1 (AA: 28-171) expressed in E. coli.
<b>Purification</b>	Purified by antigen-affinity chromatography
<b>Conjugation</b>	Unconjugated

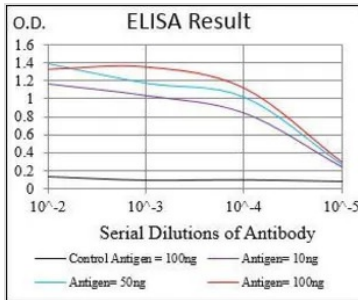


For full product information, images and publications, please visit our [website](#).

For laboratory research use only. Not for any clinical, therapeutic, or diagnostic use in humans or animals. Not for animal or human consumption.

**Note**

Purchasers shall not, and agree not to enable third parties to, analyze, copy, reverse engineer or otherwise attempt to determine the structure or sequence of the product.

**DATA IMAGES**

**GTx00451 ELISA Image**

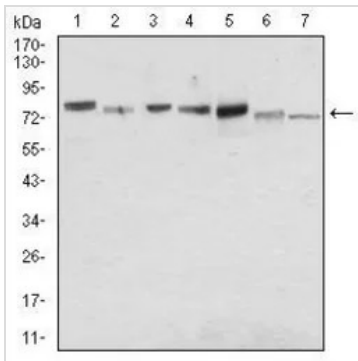
ELISA analysis of antigen using GTx00451 Syndecan-1 / CD138 antibody [1A3H4].

Black : Control antigen 100ng

Purple : Antigen 10ng

Blue : Antigen 50ng

Red : Antigen 100ng


**GTx00451 WB Image**

WB analysis of various samples using GTx00451 Syndecan-1 / CD138 antibody [1A3H4].

Lane 1 : MCF-7 cell lysate

Lane 2 : HeLa cell lysate

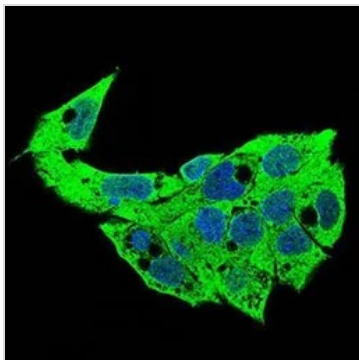
Lane 3 : HepG2 cell lysate

Lane 4 : T47D cell lysate

Lane 5 : SW620 cell lysate

Lane 6 : Jurkat cell lysate

Lane 7 : NIH/3T3 cell lysate


**GTx00451 ICC/IF Image**

ICC/IF analysis of HepG2 cells using GTx00451 Syndecan-1 / CD138 antibody [1A3H4].

Green : Primary antibody

Blue: DRAQ5 fluorescent DNA dye



For full product information, images and publications, please visit our [website](https://www.genetex.com).