

# CD20 antibody [2H7] (FITC)

**Cat. No. GTX00466-06**

<b>Host</b>	Mouse
<b>Clonality</b>	Monoclonal
<b>Isotype</b>	IgG2b
<b>Applications</b>	FCM
<b>Reactivity</b>	Human, Baboon, Chimpanzee, Cynomolgus monkey, Pig-tailed macaque, Rhesus Monkey, Squirrel monkey, Capuchin monkey

References ( 1 )  
Package  
100 test

## PRODUCT

### Summary

The 2H7 antibody reacts with human CD20, expressed by pre-B cells, resting and activated B cells, follicular dendritic cells and a small subset of T cells, but not on plasma cells. CD20 is a 33-37 kDa transmembrane protein which is differentially phosphorylated in resting and active B cells. The CD20 molecule plays a role in regulating B-cell activation.

### Applications

### Application Note

\*Optimal dilutions/concentrations should be determined by the researcher.

Suggested dilution	Recommended dilution
FCM	0.25 µg (5 µl) for 10 <sup>5</sup> -10 <sup>8</sup> cells in 100 µl sample per test

Not tested in other applications.

## Properties

<b>Form</b>	Liquid
<b>Buffer</b>	10mM NaH <sub>2</sub> PO <sub>4</sub> , 150mM NaCl, 0.1% Gelatin
<b>Preservative</b>	0.09% Sodium azide
<b>Storage</b>	Store as concentrated solution. Centrifuge briefly prior to opening vial. Store at 4°C. DO NOT FREEZE. Protect from light.
<b>Concentration</b>	0.05 mg/ml (Please refer to the vial label for the specific concentration.)
<b>Immunogen</b>	Human tonsillar B cells
<b>Purification</b>	Purified by affinity chromatography From tissue culture supernatant
<b>Conjugation</b>	Fluorescein isothiocyanate (FITC) <a href="#">Wavelength</a>

### Note

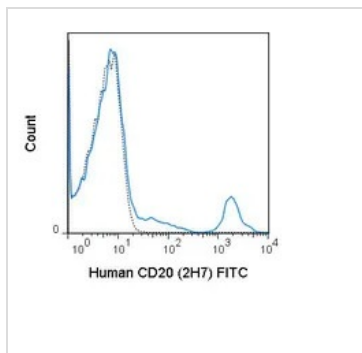
For laboratory research use only. Not for any clinical, therapeutic, or diagnostic use in humans or animals. Not for animal or human consumption.

Purchasers shall not, and agree not to enable third parties to, analyze, copy, reverse engineer or otherwise attempt to determine the structure or sequence of the product.



For full product information, images and publications, please visit our [website](#).

## DATA IMAGES



### GTX00466-06 FCM Image

FACS analysis of human peripheral blood lymphocytes using GTX00466-06 CD20 antibody [2H7] (FITC).

Solid line : Primary antibody

Dashed line : FITC mouse IgG2b isotype control

Antibody amount : 0.25  $\mu$ g



For full product information, images and publications, please visit our [website](https://www.genetex.com).