

CD33 antibody [WM53] (FITC)

Cat. No. GTX00477-06

Host	Mouse
Clonality	Monoclonal
Isotype	IgG1
Applications	FACS
Reactivity	Human, Primate

Package
100 test

Applications

Application Note

*Optimal dilutions/concentrations should be determined by the researcher.

Suggested dilution	Recommended dilution
FACS	4 μ l reagent / 100 μ l of whole blood or 10^6 cells in a suspension

Not tested in other applications.

Properties

Form	Liquid
Buffer	PBS
Preservative	15mM Sodium azide
Storage	Store as concentrated solution. Centrifuge briefly prior to opening vial. Store at 4°C. DO NOT FREEZE. Protect from light.
Concentration	Batch dependent (Please refer to the vial label for the specific concentration.)
Immunogen	Human AML cells
Purification	Purified by size-exclusion chromatography
Conjugation	Fluorescein isothiocyanate (FITC) Wavelength

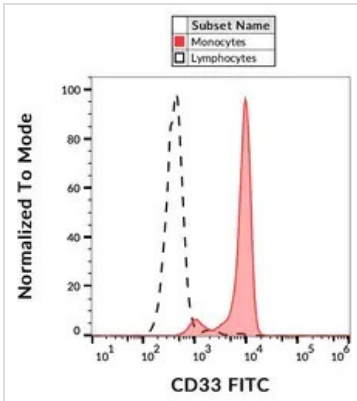
Note

For laboratory research use only. Not for any clinical, therapeutic, or diagnostic use in humans or animals. Not for animal or human consumption.

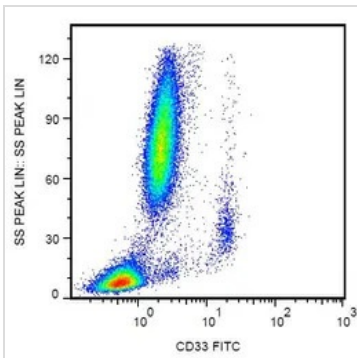
Purchasers shall not, and agree not to enable third parties to, analyze, copy, reverse engineer or otherwise attempt to determine the structure or sequence of the product.



For full product information, images and publications, please visit our [website](#).

DATA IMAGES

GTX00477-06 FACS Image

FACS analysis of human peripheral blood using GTX00477-06 CD33 antibody [WM53] (FITC).


GTX00477-06 FACS Image

FACS analysis of human peripheral blood using GTX00477-06 CD33 antibody [WM53] (FITC).



For full product information, images and publications, please visit our [website](#).