

CD11b antibody [ICRF44] (PE)

Cat. No. GTX00481-08

Host	Mouse
Clonality	Monoclonal
Isotype	IgG1
Applications	FCM
Reactivity	Human, Pig, Baboon, Chimpanzee, Cynomolgus monkey, Rhesus Monkey

References (12)
 Package
 100 test

PRODUCT

Summary

The ICRF44 antibody reacts with human CD11b, also known as integrin α M. This 165-170 kDa cell surface glycoprotein is part of a family of integrin α receptors that mediate adhesion between cells (cell-cell) and components of the extracellular matrix, e.g. fibrinogen (cell-matrix). In addition, integrin α s are active signaling receptors which recruit leukocytes to inflammatory sites and promote cell activation. Complete, functional integrin α receptors consist of distinct combinations of integrin α chains which are differentially expressed. integrin α M (CD11b) assembles with integrin β 2 (CD18) into a receptor known as Macrophage Antigen-1 (Mac-1) or complement receptor type 3 (CR3). This receptor binds and induces intracellular signaling through ICAM-1, ICAM-2, ICAM-3 and ICAM-4 on endothelial cells and can also facilitate removal of iC3b bearing foreign cells.

Applications

Application Note

*Optimal dilutions/concentrations should be determined by the researcher.

Suggested dilution

Recommended dilution

FCM	1 μ g (5 μ l) for 10^5 - 10^8 cells in 100 μ l sample per test
-----	--------------------------------------------------------------------------------

Not tested in other applications.

Properties

Form	Liquid
-------------	--------

Buffer	10mM NaH ₂ PO ₄ , 150mM NaCl, 0.1% Gelatin
---------------	------------------------------------------------------------------

Preservative	0.09% Sodium azide
---------------------	--------------------

Storage	Store as concentrated solution. Centrifuge briefly prior to opening vial. Store at 4°C. DO NOT FREEZE. Protect from light.
----------------	----------------------------------------------------------------------------------------------------------------------------

Concentration	0.2 mg/ml (Please refer to the vial label for the specific concentration.)
----------------------	----------------------------------------------------------------------------

Immunogen	Rheumatoid synovial cells and human monocytes.
------------------	------------------------------------------------

Purification	Purified by affinity chromatography From tissue culture supernatant
---------------------	------------------------------------------------------------------------

Conjugation	Phycoerythrin (PE) Wavelength
--------------------	-----------------------------------------------



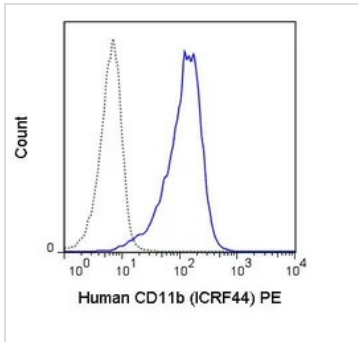
For full product information, images and publications, please visit our [website](#).

For laboratory research use only. Not for any clinical, therapeutic, or diagnostic use in humans or animals. Not for animal or human consumption.

Note

Purchasers shall not, and agree not to enable third parties to, analyze, copy, reverse engineer or otherwise attempt to determine the structure or sequence of the product.

DATA IMAGES

**GTX00481-08 FCM Image**

FACS analysis of human peripheral blood monocytes using GTX00481-08 CD11b antibody [ICRF44] (PE).

Solid line : Primary antibody

Dashed line : PE mouse IgG1 isotype control

Antibody amount : 1 μ g



For full product information, images and publications, please visit our [website](#).