

Interferon gamma antibody [4S.B3] (FITC)

Cat. No. GTX00484-06

Host	Mouse
Clonality	Monoclonal
Isotype	IgG1
Applications	FCM
Reactivity	Human, Primate

Package
100 test

Applications

Application Note

*Optimal dilutions/concentrations should be determined by the researcher.

Suggested dilution	Recommended dilution
FCM	4 μ l reagent / 100 μ l of whole blood or 10^6 cells in a suspension

Note : Permeabilization step is needed.

Not tested in other applications.

Product Note Binds both glycosylated and non-glycosylated protein.

Properties

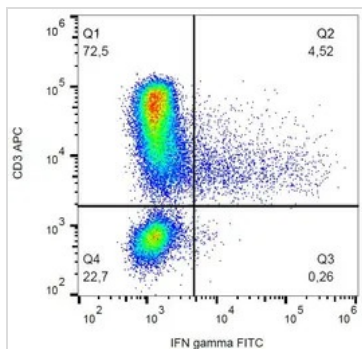
Form	Liquid
Buffer	PBS
Preservative	15mM Sodium azide
Storage	Store as concentrated solution. Centrifuge briefly prior to opening vial. Store at 4°C. DO NOT FREEZE. Protect from light.
Concentration	Batch dependent (Please refer to the vial label for the specific concentration.)
Immunogen	Interferon gamma derived from human leukocytes
Purification	Purified by size-exclusion chromatography
Conjugation	Fluorescein isothiocyanate (FITC) Wavelength

Note For laboratory research use only. Not for any clinical, therapeutic, or diagnostic use in humans or animals. Not for animal or human consumption.

Purchasers shall not, and agree not to enable third parties to, analyze, copy, reverse engineer or otherwise attempt to determine the structure or sequence of the product.



For full product information, images and publications, please visit our [website](#).

DATA IMAGES

GTX00484-06 FCM Image

FACS (intracellular staining) analysis of PHA-activated human PBMC using GTX00484-06 Interferon gamma antibody [4S.B3] (FITC).



For full product information, images and publications, please visit our [website](#).