

## CD45R antibody [RA3-6B2] (APC)

Cat. No. GTX00486-07

Host	Rat
Clonality	Monoclonal
Isotype	IgG2a
Applications	FCM
Reactivity	Human, Mouse, Cat

References ( 8 )

Package

100 µg

## PRODUCT

## Summary

The RA3-6B2 antibody reacts with the human and mouse CD45 isoform known as CD45R, or B220, a protein tyrosine phosphatase of  $\geq 220$  kDa. CD45 is one of the most abundant hematopoietic markers, and is expressed on all leukocytes (the Leukocyte Common Antigen, LCA). Various isoforms are generated and expressed in cell-specific patterns, all critical for leukocyte function. In mouse, the CD45R/B220 isoform is predominantly found on B cells, at varying levels on all stages from pro-B cells to activated B cells, and may also be detected on certain T cell and NK cell subsets. It is of note that B220 is not similarly expressed on human B cells, where it appears to be differentiation-specific and therefore expressed on only some B cell subsets. Other forms of CD45 with restricted cellular expression include CD45RA, CD45RB, CD45RO and several others.

## Applications

## Application Note

\*Optimal dilutions/concentrations should be determined by the researcher.

Suggested dilution	Recommended dilution
FCM	Assay dependent

Not tested in other applications.

## Product Note

This antibody recognizes an epitope on CD45R, which is expressed at all developmental stages of B cells, including activated B cells, but also on subsets of NK and T cells. T cells detected by this antibody are supposed to be in activated state.

## Properties

Form	Liquid
Buffer	10mM NaH <sub>2</sub> PO <sub>4</sub> , 150mM NaCl, 0.1% Gelatin
Preservative	0.09% Sodium azide
Storage	Store as concentrated solution. Centrifuge briefly prior to opening vial. Store at 4°C. DO NOT FREEZE. Protect from light.
Concentration	0.2 mg/ml (Please refer to the vial label for the specific concentration.)
Immunogen	Abelson murine leukemia virus-induced pre-B tumor cells
Purification	Purified by affinity chromatography From tissue culture supernatant



For full product information, images and publications, please visit our [website](#).

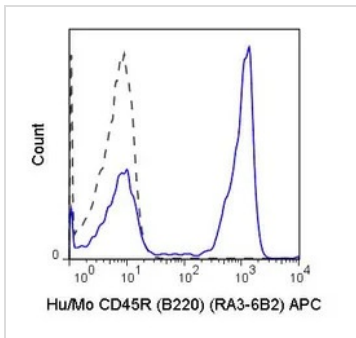
Date 2026 / 01 / 28 Page 1 of 2

**Conjugation**

Allophycocyanin (APC) [Wavelength](#)
**Note**

For laboratory research use only. Not for any clinical, therapeutic, or diagnostic use in humans or animals. Not for animal or human consumption.

Purchasers shall not, and agree not to enable third parties to, analyze, copy, reverse engineer or otherwise attempt to determine the structure or sequence of the product.

**DATA IMAGES**

**GTx00486-07 FCM Image**

FACS analysis of C57Bl/6 splenocytes using GTx00486-07 CD45R antibody [RA3-6B2] (APC).

Solid line : Primary antibody

Dashed line : APC rat IgG2a isotype control

Antibody amount : 0.25 µg



For full product information, images and publications, please visit our [website](#).