

# Mannose Receptor antibody [15-2] (PE)

**Cat. No. GTX00491-08**

<b>Host</b>	Mouse
<b>Clonality</b>	Monoclonal
<b>Isotype</b>	IgG1
<b>Applications</b>	ICC/IF, IHC-P, FCM
<b>Reactivity</b>	Human, Mouse, Rat

References ( 3 )  
 Package  
 100 test

## Applications

### Application Note

\*Optimal dilutions/concentrations should be determined by the researcher.

Suggested dilution	Recommended dilution
ICC/IF	Assay dependent
IHC-P	Assay dependent
FCM	10 µl reagent / 100 µl of whole blood or 10 <sup>6</sup> cells in a suspension

Not tested in other applications.

## Properties

<b>Form</b>	Liquid
<b>Buffer</b>	PBS
<b>Preservative</b>	15mM Sodium azide
<b>Storage</b>	Store as concentrated solution. Centrifuge briefly prior to opening vial. Store at 4°C. DO NOT FREEZE. Protect from light.
<b>Concentration</b>	Batch dependent (Please refer to the vial label for the specific concentration.)
<b>Immunogen</b>	Purified human mannose receptor
<b>Purification</b>	Purified by size-exclusion chromatography
<b>Conjugation</b>	Phycoerythrin (PE) <a href="#">Wavelength</a>

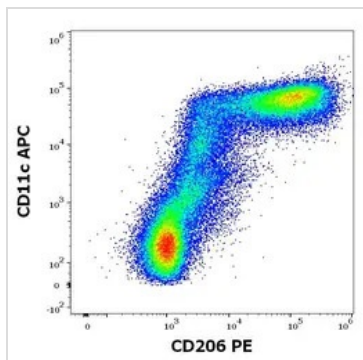
**Note**  
 For laboratory research use only. Not for any clinical, therapeutic, or diagnostic use in humans or animals. Not for animal or human consumption.

Purchasers shall not, and agree not to enable third parties to, analyze, copy, reverse engineer or otherwise attempt to determine the structure or sequence of the product.



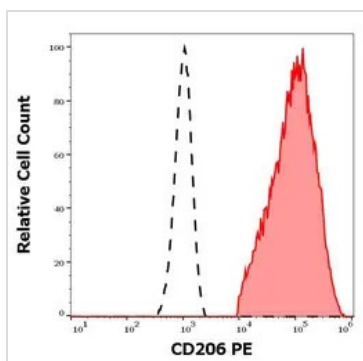
For full product information, images and publications, please visit our [website](#).

DATA IMAGES



**GTX00491-08 FCM Image**

FACS analysis of human stimulated monocytes (GM-CSF + IL-4) using GTX00491-08 Mannose Receptor antibody [15-2] (PE) and GTX80214 CD11c antibody [BU15] (APC).

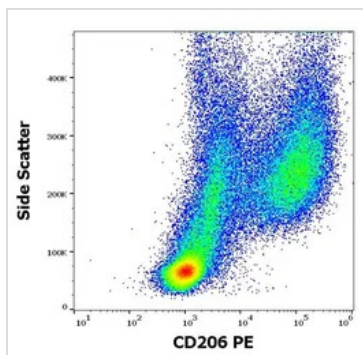


**GTX00491-08 FCM Image**

FACS analysis of human stimulated monocytes (GM-CSF + IL-4) using GTX00491-08 Mannose Receptor antibody [15-2] (PE).

Red: Stimulated

Black: Non-stimulated



**GTX00491-08 FCM Image**

FACS analysis of human stimulated monocytes (GM-CSF + IL-4) using GTX00491-08 Mannose Receptor antibody [15-2] (PE).



For full product information, images and publications, please visit our [website](#).