

Mycobacterium tuberculosis Tb10.3 antibody [PAb (187)]

Cat. No. GTX00499

Host	Rabbit
Clonality	Polyclonal
Isotype	IgG
Applications	WB, ELISA
Reactivity	Mycobacterium tuberculosis

Package
100 µg

Applications

Application Note

*Optimal dilutions/concentrations should be determined by the researcher.

Suggested dilution	Recommended dilution
WB	Assay dependent
ELISA	Assay dependent

Not tested in other applications.

Properties

Form	Liquid
Buffer	PBS
Preservative	15mM Sodium azide
Storage	Store as concentrated solution. Centrifuge briefly prior to opening vial. Store at 4°C. DO NOT FREEZE.
Concentration	1 mg/ml (Please refer to the vial label for the specific concentration.)
Immunogen	Recombinant Tb10.3 protein (produced in E. coli)
Purification	Purified by affinity chromatography From serum
Conjugation	Unconjugated

Note

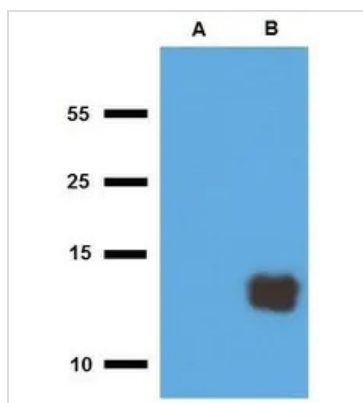
For laboratory research use only. Not for any clinical, therapeutic, or diagnostic use in humans or animals. Not for animal or human consumption.

Purchasers shall not, and agree not to enable third parties to, analyze, copy, reverse engineer or otherwise attempt to determine the structure or sequence of the product.



For full product information, images and publications, please visit our [website](#).

DATA IMAGES



GTX00499 WB Image

WB analysis of (A) non-transfected and (B) Tb10.3-transfected *E. coli* using GTX00499 Mycobacterium tuberculosis Tb10.3 antibody [PAb (187)].



For full product information, images and publications, please visit our [website](https://www.genetex.com).