

Mouse IgG2a isotype control [MOPC-173]

Cat. No. GTX00503

| | |
|--------------|--------------------------|
| Host | Mouse |
| Clonality | Monoclonal |
| Isotype | IgG2a |
| Applications | WB, ICC/IF, FCM, IP, IHC |

Package
100 µg

Applications

Application Note

*Optimal dilutions/concentrations should be determined by the researcher.

| Suggested dilution | Recommended dilution |
|--------------------|----------------------|
| WB | Assay dependent |
| ICC/IF | Assay dependent |
| FCM | Assay dependent |
| IP | Assay dependent |
| IHC | Assay dependent |

Not tested in other applications.

Product Note

This antibody reacts with an unknown epitope. It does not react with a variety of resting, activated, live, and fixed mouse, rat and human tissues.

Properties

| | |
|---------------|---|
| Form | Liquid |
| Buffer | PBS |
| Preservative | 15mM Sodium azide |
| Storage | Store as concentrated solution. Centrifuge briefly prior to opening vial. Store at 4°C. DO NOT FREEZE. |
| Concentration | Batch dependent (Please refer to the vial label for the specific concentration.) |
| Immunogen | The transplantable plasmacytoma MOPC-173 was induced by intraperitoneal injection of mineral oils into BALB/c mice. |
| Purification | Protein A purified |
| Conjugation | Unconjugated |

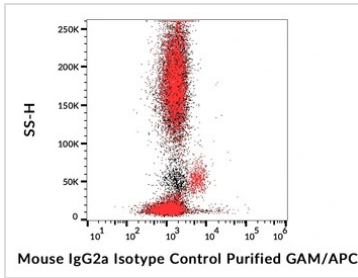
Note

For laboratory research use only. Not for any clinical, therapeutic, or diagnostic use in humans or animals. Not for animal or human consumption.

Purchasers shall not, and agree not to enable third parties to, analyze, copy, reverse engineer or otherwise attempt to determine the structure or sequence of the product.



For full product information, images and publications, please visit our [website](#).

DATA IMAGES

GTX00503 FCM Image

FACS analysis of human peripheral blood using GTX00503 Mouse IgG2a isotype control [MOPC-173].

Red : GAM-APC

Black : Isotype control



For full product information, images and publications, please visit our [website](https://www.genetex.com).