

HLA-DR antibody [L243] (FITC)

Cat. No. GTX00505-06

Host	Mouse
Clonality	Monoclonal
Isotype	IgG2a
Application	FACS
Reactivity	Human, African green monkey, Baboon, Chimpanzee, Cynomolgus monkey, Rhesus Monkey, Squirrel monkey

Package
100 test

PRODUCT

Summary

The L243 antibody reacts with a member of the human MHC Class II antigens, HLA-DR. The HLA-DR antigen is expressed on B lymphocytes, activated T lymphocytes, activated NK cells, monocytes, macrophages, other antigen presenting cells and progenitor cells. The L243 antibody is specific to an epitope on the alpha subunit of the heterodimeric HLA-DR protein and binds a different epitope than the LN3 antibody clone. It does not cross-react with HLA-DP or HLA-DQ. This antibody is reported to be cross-reactive with non-human primates including Chimpanzee, Cynomolgus, Rhesus and Baboon. Please choose the appropriate format for each application.

APPLICATION

Application Note

*Optimal dilutions/concentrations should be determined by the researcher.

Suggested dilution	Recommended dilution
FACS	0.25 µg (5 µl) for 10 ⁵ -10 ⁸ cells in 100 µl sample per test

Not tested in other applications.

Product Note

This antibody recognizes specifically HLA-DR molecules, both peptide-loaded and empty.

PROPERTIES

Form	Liquid
Buffer	10mM NaH ₂ PO ₄ , 150mM NaCl, 0.1% Gelatin
Preservative	0.09% Sodium azide
Storage	Store as concentrated solution. Centrifuge briefly prior to opening vial. Store at 4°C. DO NOT FREEZE. Protect from light.
Concentration	0.05 mg/ml (Please refer to the vial label for the specific concentration.)
Immunogen	Human B lymphocytes
Purification	Purified by affinity chromatography From tissue culture supernatant
Conjugation	Fluorescein isothiocyanate (FITC)

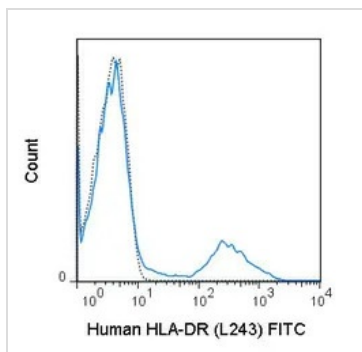


For full product information, images and publications, please visit our [website](#).

For laboratory research use only. Not for any clinical, therapeutic, or diagnostic use in humans or animals. Not for animal or human consumption.

Note

Purchasers shall not, and agree not to enable third parties to, analyze, copy, reverse engineer or otherwise attempt to determine the structure or sequence of the product.

DATA IMAGES

GTX00505-06 FACS Image

FACS analysis of human peripheral blood lymphocytes using GTX00505-06 HLA-DR antibody [L243] (FITC).

Solid line : Primary antibody

Dashed line : FITC mouse IgG2a isotype control

Antibody amount : 0.25 μ g



For full product information, images and publications, please visit our [website](#).