

HLA-DR antibody [L243] (APC)

Cat. No. GTX00505-07

Host	Mouse
Clonality	Monoclonal
Isotype	IgG2a
Applications	FCM
Reactivity	Human

Package
100 test

PRODUCT

Summary

The L243 antibody reacts with a member of the human MHC Class II antigens, HLA-DR. The HLA-DR antigen is expressed on B lymphocytes, activated T lymphocytes, activated NK cells, monocytes, macrophages, other antigen presenting cells and progenitor cells. The L243 antibody is specific to an epitope on the alpha subunit of the heterodimeric HLA-DR protein and binds a different epitope than the LN3 antibody clone. It does not cross-react with HLA-DP or HLA-DQ. This antibody is reported to be cross-reactive with non-human primates including Chimpanzee, Cynomolgus, Rhesus and Baboon. Please choose the appropriate format for each application.

Applications

Application Note

*Optimal dilutions/concentrations should be determined by the researcher.

Suggested dilution

Recommended dilution

FCM	0.25 µg (5 µl) for 10 ⁵ -10 ⁸ cells in 100 µl sample per test
-----	---

Not tested in other applications.

Product Note

This antibody recognizes specifically HLA-DR molecules, both peptide-loaded and empty.

Properties

Form	Liquid
-------------	--------

Buffer	10mM NaH ₂ PO ₄ , 150mM NaCl, 0.1% Gelatin
---------------	--

Preservative	0.09% Sodium azide
---------------------	--------------------

Storage	Store as concentrated solution. Centrifuge briefly prior to opening vial. Store at 4°C. DO NOT FREEZE. Protect from light.
----------------	--

Concentration	0.05 mg/ml (Please refer to the vial label for the specific concentration.)
----------------------	---

Immunogen	Human B lymphocytes
------------------	---------------------

Purification	Purified by affinity chromatography From tissue culture supernatant
---------------------	--

Conjugation	Allophycocyanin (APC) Wavelength
--------------------	--



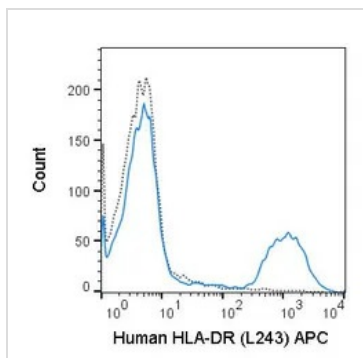
For full product information, images and publications, please visit our [website](#).

For laboratory research use only. Not for any clinical, therapeutic, or diagnostic use in humans or animals. Not for animal or human consumption.

Note

Purchasers shall not, and agree not to enable third parties to, analyze, copy, reverse engineer or otherwise attempt to determine the structure or sequence of the product.

DATA IMAGES



GTX00505-07 FCM Image

FACS analysis of human peripheral blood lymphocytes using GTX00505-07 HLA-DR antibody [L243] (APC).

Solid line : Primary antibody

Dashed line : APC mouse IgG2a isotype control

Antibody amount : 0.25 µg



For full product information, images and publications, please visit our [website](#).