

HLA-DR antibody [L243] (APC-Cy7)

Cat. No. GTX00505-15

Host	Mouse
Clonality	Monoclonal
Isotype	IgG2a
Applications	FCM
Reactivity	Human, Dog, Primate

Package
100 test

Applications

Application Note

*Optimal dilutions/concentrations should be determined by the researcher.

Suggested dilution	Recommended dilution
FCM	4 µl reagent / 100 µl of whole blood or 10 ⁶ cells in a suspension
Not tested in other applications.	

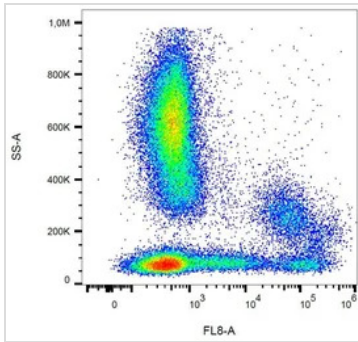
Product Note This antibody recognizes specifically HLA-DR molecules, both peptide-loaded and empty.

Properties

Form	Liquid
Buffer	PBS
Preservative	15mM Sodium azide
Storage	Store as concentrated solution. Centrifuge briefly prior to opening vial. Store at 4°C. DO NOT FREEZE. Protect from light.
Concentration	Batch dependent (Please refer to the vial label for the specific concentration.)
Immunogen	Human B lymphocytes
Purification	Purified by size-exclusion chromatography
Conjugation	Allophycocyanin-Cyanine7 (APC-Cy7) Wavelength
Note	For laboratory use only. Not for any clinical, therapeutic, or diagnostic use in humans or animals. Not for animal or human consumption. Cy and CyDye are trademarks of GE Healthcare.



For full product information, images and publications, please visit our [website](#).

DATA IMAGES

GTX00505-15 FCM Image

FACS analysis of human peripheral blood using GTX00505-15 HLA-DR antibody [L243] (APC-Cy7).



For full product information, images and publications, please visit our [website](https://www.genetex.com).