

Mouse Anti-Human kappa light chain antibody [TB28-2] (APC)

Cat. No. GTX00506-07

| | |
|---------------------|------------|
| Host | Mouse |
| Clonality | Monoclonal |
| Isotype | IgG1 |
| Applications | FCM |
| Reactivity | Human |

Package
100 test

Applications

Application Note

*Optimal dilutions/concentrations should be determined by the researcher.

| Suggested dilution | Recommended dilution |
|--------------------|---|
| FCM | 10 μ l reagent / 100 μ l of whole blood or 10^6 cells in a suspension |

Note : Do not need a permeabilization step.

Not tested in other applications.

Product Note

This antibody recognizes human Ig kappa light chains of both secreted and cell surface immunoglobulin. It detects also free kappa light chains.

Properties

| | |
|----------------------|--|
| Form | Liquid |
| Buffer | PBS |
| Preservative | 15mM Sodium azide |
| Storage | Store as concentrated solution. Centrifuge briefly prior to opening vial. Store at 4°C. DO NOT FREEZE. Protect from light. |
| Concentration | Batch dependent (Please refer to the vial label for the specific concentration.) |
| Immunogen | Human IgG-kappa myeloma protein |
| Purification | Purified by size-exclusion chromatography |
| Conjugation | Allophycocyanin (APC) Wavelength |

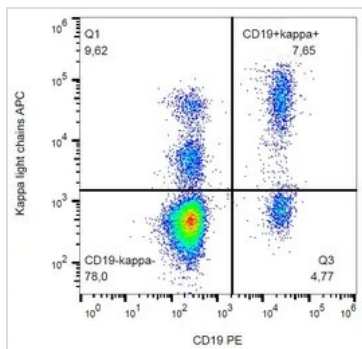
Note

For laboratory research use only. Not for any clinical, therapeutic, or diagnostic use in humans or animals. Not for animal or human consumption.

Purchasers shall not, and agree not to enable third parties to, analyze, copy, reverse engineer or otherwise attempt to determine the structure or sequence of the product.



For full product information, images and publications, please visit our [website](#).

DATA IMAGES

GTX00506-07 FCM Image

FACS analysis of human peripheral blood using GTX00506-07 Human kappa Light chain antibody [TB28-2] (APC).



For full product information, images and publications, please visit our [website](#).