

CD133 antibody [293C3] (APC)

Cat. No. GTX00508-07

| | |
|---------------------|------------|
| Host | Mouse |
| Clonality | Monoclonal |
| Isotype | IgG2b |
| Applications | FCM |
| Reactivity | Human |

Package
100 test

Applications

Application Note

*Optimal dilutions/concentrations should be determined by the researcher.

| Suggested dilution | Recommended dilution |
|--------------------|--|
| FCM | 10 µl reagent / 100 µl of whole blood or 10 ⁶ cells in a suspension |

Note : Do not need a permeabilization step.

Not tested in other applications.

Product Note

This antibody recognizes the epitope 2 on human CD133 (CD133/2), a 120 kDa glycoprotein of prominin family, expressed e.g. on progenitor cells. This antibody is important for identification of human renal progenitors.

Properties

| | |
|----------------------|--|
| Form | Liquid |
| Buffer | PBS |
| Preservative | 15mM Sodium azide |
| Storage | Store as concentrated solution. Centrifuge briefly prior to opening vial. Store at 4°C. DO NOT FREEZE. Protect from light. |
| Concentration | Batch dependent (Please refer to the vial label for the specific concentration.) |
| Purification | Purified by size-exclusion chromatography |
| Conjugation | Allophycocyanin (APC) Wavelength |

Note

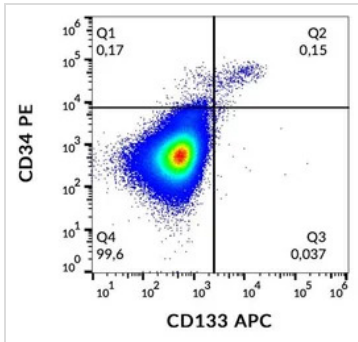
For laboratory research use only. Not for any clinical, therapeutic, or diagnostic use in humans or animals. Not for animal or human consumption.

Purchasers shall not, and agree not to enable third parties to, analyze, copy, reverse engineer or otherwise attempt to determine the structure or sequence of the product.



For full product information, images and publications, please visit our [website](#).

DATA IMAGES

**GTX00508-07 FCM Image**

FACS analysis of human peripheral blood using GTX00508-07 CD133 antibody [293C3] (APC).



For full product information, images and publications, please visit our [website](#).