

## TPX2 antibody [TPX2-01]

**Cat. No. GTX00510**

<b>Host</b>	Mouse
<b>Clonality</b>	Monoclonal
<b>Isotype</b>	IgG1
<b>Applications</b>	WB, ICC/IF, IHC-P, IP, ELISA
<b>Reactivity</b>	Human, Mouse, Rat

**Package**  
100 µg

## Applications

**Application Note**

\*Optimal dilutions/concentrations should be determined by the researcher.

Suggested dilution	Recommended dilution
WB	Assay dependent
ICC/IF	Assay dependent
IHC-P	Assay dependent
IP	Assay dependent
ELISA	Assay dependent

Not tested in other applications.

**Calculated MW** 86 kDa. ( [Note](#) )

**Product Note** This antibody recognizes the epitope EPFVPKKEKKS (aa 636-646 in human) of TPX2.

## Properties

<b>Form</b>	Liquid
<b>Buffer</b>	PBS
<b>Preservative</b>	15mM Sodium azide
<b>Storage</b>	Store as concentrated solution. Centrifuge briefly prior to opening vial. Store at 4°C. DO NOT FREEZE.
<b>Concentration</b>	1 mg/ml (Please refer to the vial label for the specific concentration.)
<b>Immunogen</b>	Human TPX2
<b>Purification</b>	Protein A purified From tissue culture supernatant
<b>Conjugation</b>	Unconjugated



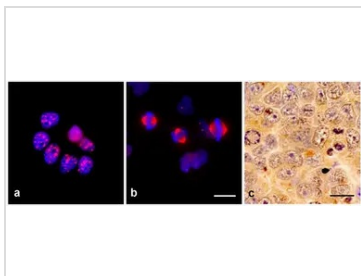
For full product information, images and publications, please visit our [website](#).

For laboratory research use only. Not for any clinical, therapeutic, or diagnostic use in humans or animals. Not for animal or human consumption.

**Note**

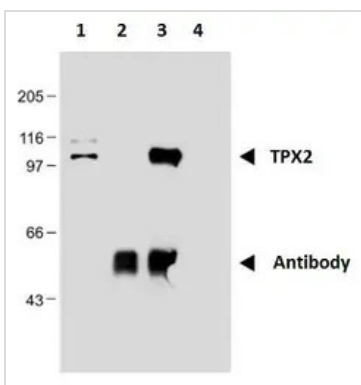
Purchasers shall not, and agree not to enable third parties to, analyze, copy, reverse engineer or otherwise attempt to determine the structure or sequence of the product.

DATA IMAGES



**GTX00510 ICC/IF Image**

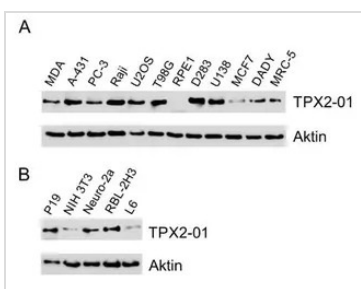
ICC/IF analysis of T98G (Panel A - interphase and B - mitosis) and U87-MG cells (Panel C) using GTX00510 TPX2 antibody [TPX2-01].



**GTX00510 IP Image**

IP analysis of nuclear extract of HEK293 cells using GTX00510 TPX2 antibody [TPX2-01].

Lane 1: nuclear extract  
Lane 2 : antibody  
Lane 3: immunoprecipitate,  
Lane 4 : carrier



**GTX00510 WB Image**

WB analysis of (A) various human, (B) mouse, (P19, NIH 3T3, Neuro-2a) and rat (RBL-2H3, L6) cell lysates using GTX00510 TPX2 antibody [TPX2-01].



For full product information, images and publications, please visit our [website](#).