

CD3 zeta (phospho Tyr72) antibody [EM-26]

Cat. No. GTX00521

Host	Mouse
Clonality	Monoclonal
Isotype	IgG2b
Applications	WB, ICC/IF, FCM
Reactivity	Human, Mouse

Package
100 µg

Applications

Application Note

*Optimal dilutions/concentrations should be determined by the researcher.

Suggested dilution	Recommended dilution
WB	Assay dependent
ICC/IF	Assay dependent
FCM	Assay dependent

Not tested in other applications.

Calculated MW 19 kDa. ([Note](#))

Properties

Form	Liquid
Buffer	PBS
Preservative	15mM Sodium azide
Storage	Store as concentrated solution. Centrifuge briefly prior to opening vial. Store at 4°C. DO NOT FREEZE.
Concentration	1 mg/ml (Please refer to the vial label for the specific concentration.)
Immunogen	A phospho specific peptide corresponding to the amino acids surrounding tyrosine 72 of mouse CD3 zeta linked to KLH
Purification	Protein A purified
Conjugation	Unconjugated

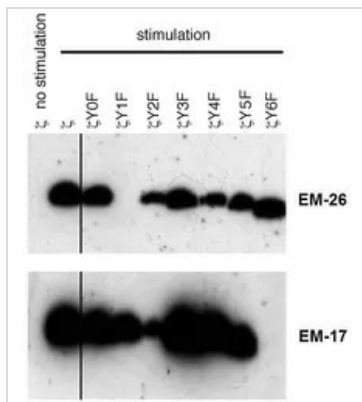
Note

For laboratory research use only. Not for any clinical, therapeutic, or diagnostic use in humans or animals. Not for animal or human consumption.

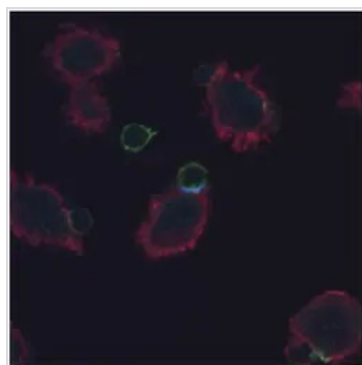
Purchasers shall not, and agree not to enable third parties to, analyze, copy, reverse engineer or otherwise attempt to determine the structure or sequence of the product.



For full product information, images and publications, please visit our [website](#).

DATA IMAGES

GTX00521 WB Image

WB analysis of phosphorylated particular human CD3 zeta mutants using GTX00521 CD3 zeta (phospho Tyr72) antibody [EM-26] and CD3 zeta (phosphoTyr153) [EM-17]. The Y1F and Y6F mutants lack phosphotyrosine 72 and 153, respectively.


GTX00521 ICC/IF Image

ICC/IF analysis of immunological synapse formed between the lymph node naive T cells (from AND TCR transgenic mice) and DCEK cells loaded with MCC peptide using GTX00521 CD3 zeta (phospho Tyr72) antibody [EM-26].

Green : total CD3 zeta

Blue : GTX00521

Red : Actin



For full product information, images and publications, please visit our [website](#).