

NCK1 antibody [EM-06]

Cat. No. GTX00522

Host	Mouse
Clonality	Monoclonal
Isotype	IgG1
Applications	WB, ICC/IF
Reactivity	Human, Mouse

Package
100 µg

Applications

Application Note

*Optimal dilutions/concentrations should be determined by the researcher.

Suggested dilution	Recommended dilution
WB	Assay dependent
ICC/IF	Assay dependent

Not tested in other applications.

Calculated MW 43 kDa. ([Note](#))

Properties

Form	Liquid
Buffer	PBS
Preservative	15mM Sodium azide
Storage	Store as concentrated solution. Centrifuge briefly prior to opening vial. Store at 4°C. DO NOT FREEZE.
Concentration	1 mg/ml (Please refer to the vial label for the specific concentration.)
Immunogen	Purified recombinant second SH3 domain of human Nck1 fused to GST
Purification	Protein A purified
Conjugation	Unconjugated

Note

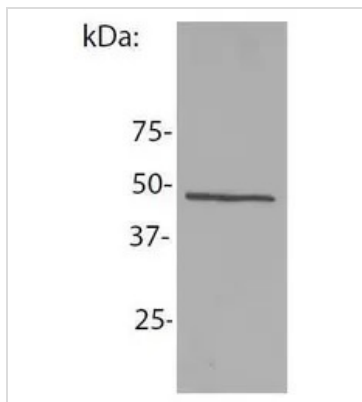
For laboratory research use only. Not for any clinical, therapeutic, or diagnostic use in humans or animals. Not for animal or human consumption.

Purchasers shall not, and agree not to enable third parties to, analyze, copy, reverse engineer or otherwise attempt to determine the structure or sequence of the product.



For full product information, images and publications, please visit our [website](#).

DATA IMAGES

**GTX00522 WB Image**

WB analysis of mouse lymph node lymphocytes using GTX00522 NCK1 antibody [EM-06].



For full product information, images and publications, please visit our [website](#).