

## Drebrin antibody [DBN-N-03]

Cat. No. GTX00524

Host	Mouse
Clonality	Monoclonal
Isotype	IgG2b
Applications	WB, FCM, MS
Reactivity	Human

Package  
100 µg

## Applications

## Application Note

\*Optimal dilutions/concentrations should be determined by the researcher.

Suggested dilution	Recommended dilution
WB	Assay dependent
FCM	Assay dependent
MS	Assay dependent

Not tested in other applications.

Calculated MW 71 kDa. ([Note](#))

## Properties

Form	Liquid
Buffer	TBS
Preservative	15mM Sodium azide
Storage	Store as concentrated solution. Centrifuge briefly prior to opening vial. Store at 4°C. DO NOT FREEZE.
Concentration	1 mg/ml (Please refer to the vial label for the specific concentration.)
Immunogen	Bacterially expressed N-terminal fragment of recombinant human drebrin (aa 1-326)
Purification	Protein A purified
Conjugation	Unconjugated

## Note

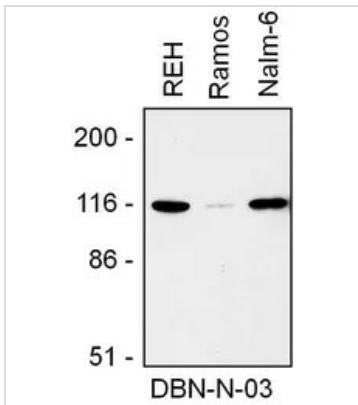
For laboratory research use only. Not for any clinical, therapeutic, or diagnostic use in humans or animals. Not for animal or human consumption.

Purchasers shall not, and agree not to enable third parties to, analyze, copy, reverse engineer or otherwise attempt to determine the structure or sequence of the product.



For full product information, images and publications, please visit our [website](#).

## DATA IMAGES



### GTX00524 WB Image

WB analysis of REH, Ramos, and Nalm-6 cell lysate using GTX00524 Drebrin antibody [DBN-N-03].



For full product information, images and publications, please visit our [website](https://www.genetex.com).