

CD45 antibody [HI30] (PE)

Cat. No. GTX00526-08

Host	Mouse
Clonality	Monoclonal
Isotype	IgG1
Applications	FCM
Reactivity	Human

Package
100 test

Applications

Application Note

*Optimal dilutions/concentrations should be determined by the researcher.

Suggested dilution	Recommended dilution
FCM	5 µl/1x10 ⁵ -1x10 ⁸ cells

Note : The suggested use of these reagents is in a final volume of 100µl.

Not tested in other applications.

Properties

Form	Liquid
Buffer	10mM NaH ₂ PO ₄ , 150mM NaCl, 0.1% gelatin
Preservative	0.09% Sodium Azide
Storage	Store as concentrated solution. Centrifuge briefly prior to opening vial. Store at 4°C. DO NOT FREEZE. Protect from light.
Concentration	0.025 mg/ml (Please refer to the vial label for the specific concentration.)
Purification	Purified by affinity chromatography From tissue culture supernatant
Conjugation	Phycoerythrin (PE) Wavelength

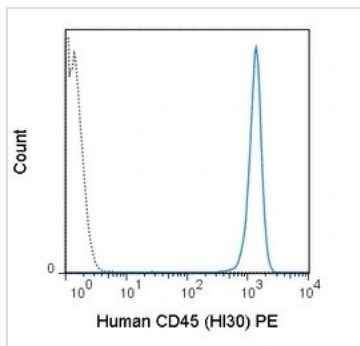
Note

For laboratory research use only. Not for any clinical, therapeutic, or diagnostic use in humans or animals. Not for animal or human consumption.

Purchasers shall not, and agree not to enable third parties to, analyze, copy, reverse engineer or otherwise attempt to determine the structure or sequence of the product.



For full product information, images and publications, please visit our [website](#).

DATA IMAGES

GTX00526-08 FCM Image

FACS analysis of human peripheral blood lymphocytes using GTX00526-08 CD45 antibody [HI30] (PE).

Solid line : Primary antibody

Dashed line : Mouse IgG1 isotype control (PE)

Antibody amount : 0.125 μ g



For full product information, images and publications, please visit our [website](https://www.genetex.com).