

NTAL antibody [PAb (487)]

Cat. No. GTX00531

Host	Rabbit
Clonality	Polyclonal
Isotype	IgG
Applications	WB, ICC/IF
Reactivity	Mouse, Rat

Package
100 µg

Applications

Application Note

*Optimal dilutions/concentrations should be determined by the researcher.

Suggested dilution	Recommended dilution
WB	Assay dependent
ICC/IF	Assay dependent

Not tested in other applications.

Calculated MW 23 kDa. ([Note](#))**Product Note** We do not recommend use of this product for Human samples.

Properties

Form	Liquid
Buffer	PBS
Preservative	15mM Sodium azide
Storage	Store as concentrated solution. Centrifuge briefly prior to opening vial. Store at 4°C. DO NOT FREEZE.
Concentration	1 mg/ml (Please refer to the vial label for the specific concentration.)
Immunogen	Recombinant mouse NTAL (aa 30-203).
Purification	Purified by affinity chromatography From serum
Conjugation	Unconjugated

Note

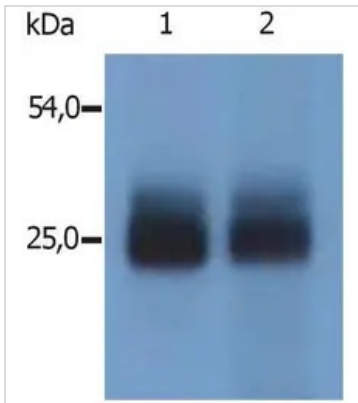
For laboratory research use only. Not for any clinical, therapeutic, or diagnostic use in humans or animals. Not for animal or human consumption.

Purchasers shall not, and agree not to enable third parties to, analyze, copy, reverse engineer or otherwise attempt to determine the structure or sequence of the product.



For full product information, images and publications, please visit our [website](#).

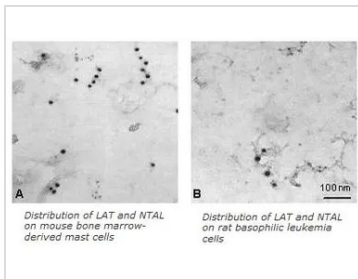
DATA IMAGES



GTx00531 WB Image

WB analysis of mouse spleen tissue (non-reducing) using GTx00531 NTAL antibody [PAb (487)].

Lane 1 : GTx00531 Lane 2 : polyclonal anti-mouse NTAL antibody (specific for N-terminal domain of mouse NTAL)



GTx00531 ICC/IF Image

ICC/IF analysis of mouse bone marrow-derived mast cells (BMMC; Panel A) and RBL rat basophilic leukemia cell line (Panel B) using GTx00531 NTAL antibody [PAb (487)] and anti-LAT antibody.



For full product information, images and publications, please visit our [website](#).