

Siglec-5 antibody [1A5]

Cat. No. GTX00537

Host	Mouse
Clonality	Monoclonal
Isotype	IgG1
Applications	ICC/IF, IHC-Fr, FCM, IP, ELISA
Reactivity	Human, Primate

Package
100 µg

Applications

Application Note

*Optimal dilutions/concentrations should be determined by the researcher.

Suggested dilution	Recommended dilution
ICC/IF	Assay dependent
IHC-Fr	Assay dependent
FCM	Assay dependent
IP	Assay dependent
ELISA	Assay dependent

Not tested in other applications.

Product Note This antibody reacts with Siglec-14, whose first two Ig domains are almost identical to those of CD170.

Properties

Form	Liquid
Buffer	PBS
Preservative	15mM Sodium azide
Storage	Store as concentrated solution. Centrifuge briefly prior to opening vial. Store at 4°C. DO NOT FREEZE.
Concentration	1 mg/ml (Please refer to the vial label for the specific concentration.)
Immunogen	Fusion protein composed of human CD170 extracellular domain and Fc region of human IgG1
Purification	Protein A purified From tissue culture supernatant
Conjugation	Unconjugated

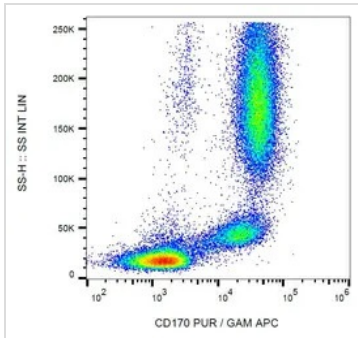


For full product information, images and publications, please visit our [website](#).

For laboratory research use only. Not for any clinical, therapeutic, or diagnostic use in humans or animals. Not for animal or human consumption.

Note

Purchasers shall not, and agree not to enable third parties to, analyze, copy, reverse engineer or otherwise attempt to determine the structure or sequence of the product.

DATA IMAGES

GTX00537 FCM Image

FACS analysis of human peripheral blood using GTX00537 Siglec-5 antibody [1A5].



For full product information, images and publications, please visit our [website](#).