

Siglec-5 antibody [1A5] (PE)

Cat. No. GTX00537-08

Host	Mouse
Clonality	Monoclonal
Isotype	IgG1
Applications	FCM
Reactivity	Human, Primate

Package
100 test

Applications

Application Note

*Optimal dilutions/concentrations should be determined by the researcher.

Suggested dilution	Recommended dilution
FCM	Assay dependent

Note : Do not need a permeabilization step.

Not tested in other applications.

Product Note This antibody crossreacts with Siglec-14, whose first two Ig domains are almost identical to those of CD170.

Properties

Form	Liquid
Buffer	PBS
Preservative	15mM Sodium azide
Storage	Store as concentrated solution. Centrifuge briefly prior to opening vial. Store at 4°C. DO NOT FREEZE. Protect from light.
Concentration	Batch dependent (Please refer to the vial label for the specific concentration.)
Immunogen	Fusion protein composed of human CD170 extracellular domain and Fc region of human IgG1
Purification	Purified IgG
Conjugation	Phycoerythrin (PE) Wavelength

Note

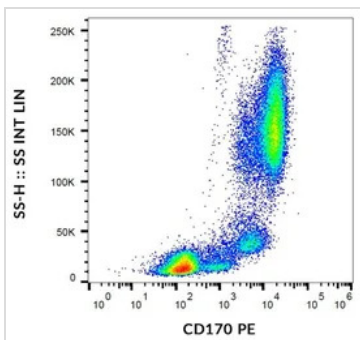
For laboratory research use only. Not for any clinical, therapeutic, or diagnostic use in humans or animals. Not for animal or human consumption.

Purchasers shall not, and agree not to enable third parties to, analyze, copy, reverse engineer or otherwise attempt to determine the structure or sequence of the product.



For full product information, images and publications, please visit our [website](#).

DATA IMAGES

**GTX00537-08 FCM Image**

FACS analysis of human peripheral blood using GTX00537-08 Siglec-5 antibody [1A5] (PE).



For full product information, images and publications, please visit our [website](#).