

## Ki67 antibody [Ki-67]

Cat. No. GTX00538

Host	Mouse
Clonality	Monoclonal
Isotype	IgG1
Applications	WB, ICC/IF, FCM, IHC
Reactivity	Human, Bovine

References ( 2 )

Package

100 µg

## Applications

## Application Note

\*Optimal dilutions/concentrations should be determined by the researcher.

Suggested dilution	Recommended dilution
WB	Assay dependent
ICC/IF	Assay dependent
FCM	Assay dependent
IHC	Assay dependent

Not tested in other applications.

Calculated MW 359 kDa. ( [Note](#) )

## Properties

Form	Liquid
Buffer	PBS
Preservative	15mM Sodium azide
Storage	Store as concentrated solution. Centrifuge briefly prior to opening vial. Store at 4°C. DO NOT FREEZE.
Concentration	1 mg/ml (Please refer to the vial label for the specific concentration.)
Immunogen	Nuclei of the Hodgkin lymphoma cell line L428
Purification	Protein A purified
Conjugation	Unconjugated

## Note

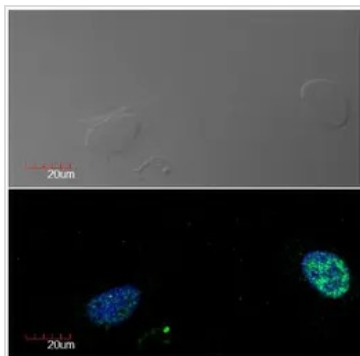
For laboratory research use only. Not for any clinical, therapeutic, or diagnostic use in humans or animals. Not for animal or human consumption.

Purchasers shall not, and agree not to enable third parties to, analyze, copy, reverse engineer or otherwise attempt to determine the structure or sequence of the product.



For full product information, images and publications, please visit our [website](#).

## DATA IMAGES



### GTX00538 ICC/IF Image

ICC/IF analysis of U2OS cells using GTX00538 Ki67 antibody [Ki-67].

Green : Primary antibody

Blue : DAPI



For full product information, images and publications, please visit our [website](#).