

## CD30 antibody [Ber-H8]

**Cat. No. GTX00539**

|                     |                    |
|---------------------|--------------------|
| <b>Host</b>         | Mouse              |
| <b>Clonality</b>    | Monoclonal         |
| <b>Isotype</b>      | IgG1               |
| <b>Applications</b> | IHC-P, IHC-Fr, FCM |
| <b>Reactivity</b>   | Human              |

Package  
100 µg

## Applications

**Application Note**

\*Optimal dilutions/concentrations should be determined by the researcher.

| Suggested dilution | Recommended dilution |
|--------------------|----------------------|
| IHC-P              | Assay dependent      |
| IHC-Fr             | Assay dependent      |
| FCM                | Assay dependent      |

Not tested in other applications.

**Product Note** This antibody recognizes extracellular part of CD30 (Ki-1 antigen).

## Properties

|                      |  |
|----------------------|--|
| <b>Form</b>          | Liquid   |
| <b>Buffer</b>        | PBS  |
| <b>Preservative</b>  | 15mM Sodium azide  |
| <b>Storage</b>       | Store as concentrated solution. Centrifuge briefly prior to opening vial. Store at 4°C. DO NOT FREEZE. |
| <b>Concentration</b> | 1 mg/ml (Please refer to the vial label for the specific concentration.)                               |
| <b>Purification</b>  | Protein A purified   |
| <b>Conjugation</b>   | Unconjugated   |

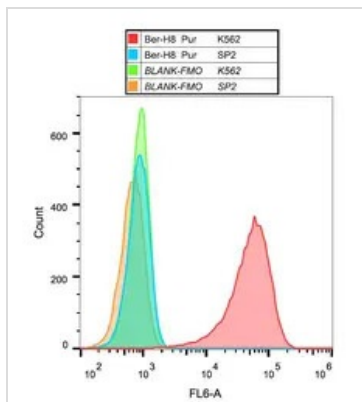
**Note**

For laboratory research use only. Not for any clinical, therapeutic, or diagnostic use in humans or animals. Not for animal or human consumption.

Purchasers shall not, and agree not to enable third parties to, analyze, copy, reverse engineer or otherwise attempt to determine the structure or sequence of the product.



For full product information, images and publications, please visit our [website](#).

**DATA IMAGES**

**GTX00539 FCM Image**

FACS analysis of K562 cells using GTX00539 CD30 antibody [Ber-H8].



For full product information, images and publications, please visit our [website](#).