

## ICAM2 antibody [CBR-IC2/2]

**Cat. No. GTX00540**

<b>Host</b>	Mouse
<b>Clonality</b>	Monoclonal
<b>Isotype</b>	IgG2a
<b>Applications</b>	IHC-Fr, FCM, IP
<b>Reactivity</b>	Human

**Package**  
100 µg

## Applications

**Application Note**

\*Optimal dilutions/concentrations should be determined by the researcher.

Suggested dilution	Recommended dilution
IHC-Fr	Assay dependent
FCM	Assay dependent
IP	Assay dependent

Not tested in other applications.

## Properties

<b>Form</b>	Liquid
<b>Buffer</b>	PBS
<b>Preservative</b>	15mM Sodium azide
<b>Storage</b>	Store as concentrated solution. Centrifuge briefly prior to opening vial. Store at 4°C. DO NOT FREEZE.
<b>Concentration</b>	1 mg/ml (Please refer to the vial label for the specific concentration.)
<b>Immunogen</b>	Human CD102 cDNA transfected COS cells
<b>Purification</b>	Protein A purified
<b>Conjugation</b>	Unconjugated

**Note**

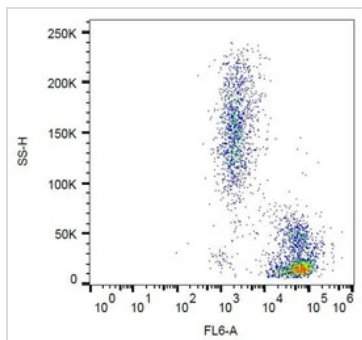
For laboratory research use only. Not for any clinical, therapeutic, or diagnostic use in humans or animals. Not for animal or human consumption.

Purchasers shall not, and agree not to enable third parties to, analyze, copy, reverse engineer or otherwise attempt to determine the structure or sequence of the product.



For full product information, images and publications, please visit our [website](#).

## DATA IMAGES

**GTX00540 FCM Image**

FACS analysis of human peripheral blood using GTX00540 ICAM2 antibody [CBR-IC2/2].



For full product information, images and publications, please visit our [website](#).