

p75 NGF Receptor / CD271 antibody [NGFR5] (Biotin)

Cat. No. GTX00556-02

| | |
|--------------------|-------------------------------------|
| Host | Mouse |
| Clonality | Monoclonal |
| Isotype | IgG1 |
| Application | WB, ICC/IF, IHC-P, FACS, IP |
| Reactivity | Human, Rabbit, Cat, Ferret, Primate |

Reference (1)
Package
100 µg

APPLICATION

Application Note

*Optimal dilutions/concentrations should be determined by the researcher.

| Suggested dilution | Recommended dilution |
|--------------------|----------------------|
| WB | Assay dependent |
| ICC/IF | Assay dependent |
| IHC-P | Assay dependent |
| FACS | Assay dependent |
| IP | Assay dependent |

Not tested in other applications.

Calculated MW 45 kDa. ([Note](#))

Product Note The epitope is localized within ammino acids 1 - 160.
We do not recommend use of this product for Mouse,Rat samples.

PROPERTIES

| | |
|----------------------|--|
| Form | Liquid |
| Buffer | PBS |
| Preservative | 15mM Sodium azide |
| Storage | Store as concentrated solution. Centrifuge briefly prior to opening vial. Store at 4°C. DO NOT FREEZE. |
| Concentration | 1 mg/ml (Please refer to the vial label for the specific concentration.) |
| Immunogen | Purified CD271 protein isolated from human melanoma cell line A875 |
| Purification | Purified IgG |
| Conjugation | Biotin The reagent is free of unconjugated biotin. |

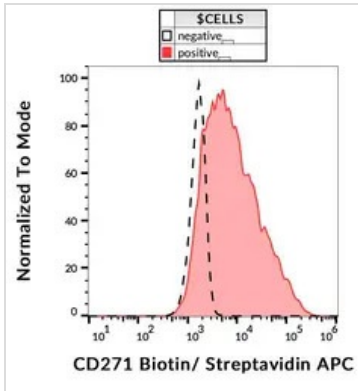


For full product information, images and publications, please visit our [website](#).

For laboratory research use only. Not for any clinical, therapeutic, or diagnostic use in humans or animals. Not for animal or human consumption.

Note

Purchasers shall not, and agree not to enable third parties to, analyze, copy, reverse engineer or otherwise attempt to determine the structure or sequence of the product.

DATA IMAGES

GTX00556-02 FACS Image

FACS analysis of REH cells using GTX00556-02 p75 NGF Receptor / CD271 antibody [NGFR5] (Biotin).



For full product information, images and publications, please visit our [website](#).