

## Glycophorin A antibody [JC159] (FITC)

Cat. No. GTX00583-06

Host	Mouse
Clonality	Monoclonal
Isotype	IgG1
Application	FACS
Reactivity	Human, Rat

**Package**  
100 test

## APPLICATION

## Application Note

\*Optimal dilutions/concentrations should be determined by the researcher.

Suggested dilution	Recommended dilution
FACS	4 $\mu$ l reagent / 100 $\mu$ l of whole blood or $10^6$ cells in a suspension
Not tested in other applications.	

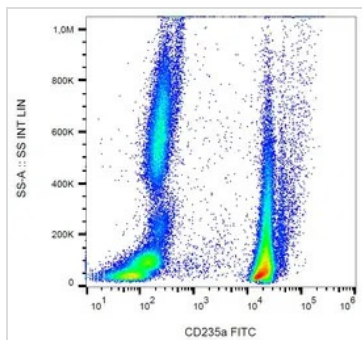
**Calculated MW** 16 kDa. ( [Note](#) )**Product Note** This antibody recognizes an epitope between amino acids 27 and 40 of the extracellular portion of CD235a (glycophorin A). The antibody does not react with glycophorin B.

## PROPERTIES

Form	Liquid
Buffer	PBS
Preservative	15mM Sodium azide
Storage	Store as concentrated solution. Centrifuge briefly prior to opening vial. Store at 4°C. DO NOT FREEZE. Protect from light.
Concentration	Batch dependent (Please refer to the vial label for the specific concentration.)
Immunogen	Membrane preparation from splenic hairy cell leukemia
Purification	Purified by size-exclusion chromatography
Conjugation	Fluorescein isothiocyanate (FITC)

**Note**  
For laboratory research use only. Not for any clinical, therapeutic, or diagnostic use in humans or animals. Not for animal or human consumption.  
  
Purchasers shall not, and agree not to enable third parties to, analyze, copy, reverse engineer or otherwise attempt to determine the structure or sequence of the product.

For full product information, images and publications, please visit our [website](#).

**DATA IMAGES**

**GTX00583-06 FACS Image**

FACS analysis of human peripheral blood using GTX00583-06 Glycophorin A antibody [JC159] (FITC).



For full product information, images and publications, please visit our [website](https://www.genetex.com).