

Phospholipid scramblase 1 antibody [13A6(TEC-23)]

Cat. No. GTX00588

Host	Mouse
Clonality	Monoclonal
Isotype	IgG2a
Application	WB, ICC/IF, FACS, IP
Reactivity	Rat

Package
100 µl

APPLICATION

Application Note

*Optimal dilutions/concentrations should be determined by the researcher.

Suggested dilution	Recommended dilution
WB	Assay dependent
ICC/IF	Assay dependent
FACS	Assay dependent
IP	Assay dependent

Not tested in other applications.

Calculated MW 37 kDa. ([Note](#))

PROPERTIES

Form	Liquid
Buffer	Ascites
Preservative	15mM Sodium azide
Storage	Store as concentrated solution. Centrifuge briefly prior to opening vial. Store at 4°C. DO NOT FREEZE.
Immunogen	BALB/c mice were immunized with pooled lipid rafts isolated from RBL-2H3 cells. Hybridoma cells were obtained after fusion of SP02 mouse myeloma cells with spleen cells of immunized mice using standard procedures.
Purification	Unpurified
Conjugation	Unconjugated

Note

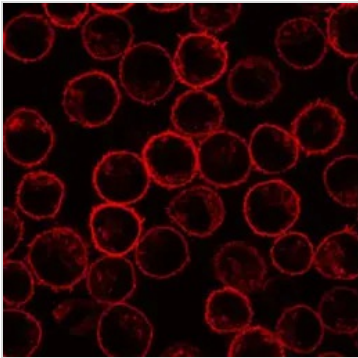
For laboratory research use only. Not for any clinical, therapeutic, or diagnostic use in humans or animals. Not for animal or human consumption.

Purchasers shall not, and agree not to enable third parties to, analyze, copy, reverse engineer or otherwise attempt to determine the structure or sequence of the product.



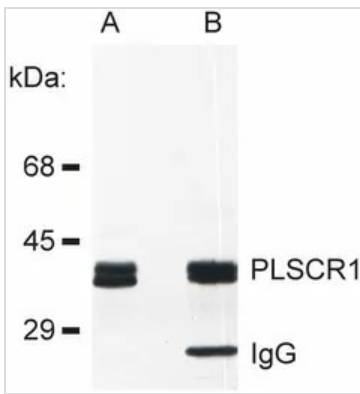
For full product information, images and publications, please visit our [website](#).

DATA IMAGES



GTx00588 ICC/IF Image

ICC/IF analysis of RBL cells using GTx00588 Phospholipid scramblase 1 antibody [13A6(TEC-23)].



GTx00588 IP Image

IP analysis of RBL cell lysate using GTx00588 Phospholipid scramblase 1 antibody [13A6(TEC-23)]. GTx00588 was used both in IP and IB.

Lane 1 : RBL lysate

Lane 2 : PLSCR1 immunoprecipitate from RBL lysate



For full product information, images and publications, please visit our [website](https://www.genetex.com).