

CD3 epsilon antibody [UCHT1] (PerCP-Cy5.5)

Cat. No. GTX00598-11

Host	Mouse
Clonality	Monoclonal
Isotype	IgG1
Application	FACS
Reactivity	Human

Reference (9)

Package

100 test

PRODUCT

Summary

The UCHL1 antibody reacts with the human CD45 isoform known as CD45RO, a protein tyrosine phosphatase of ≥ 220 kDa. CD45 is one of the most abundant hematopoietic markers, and is expressed on all leukocytes (the Leukocyte Common Antigen, LCA). Various isoforms are generated and expressed in cell-specific patterns. With their broad cell distribution, CD45 isoforms are critical for many leukocyte functions, regulating signal transduction and cell activation associated with the T cell receptor, B cell receptor, and IL-2 receptor. Other forms of CD45, with restricted cellular expression, include CD45R (B220), CD45RA and CD45RB.

APPLICATION

Application Note

*Optimal dilutions/concentrations should be determined by the researcher.

Suggested dilution	Recommended dilution
FACS	0.5 μ g (5 μ l) for 10^5 - 10^8 cells in 100 μ l sample per test

Not tested in other applications.

Calculated MW	23 kDa. (Note)
Product Note	This antibody reacts with the epsilon chain of the CD3 complex.

PROPERTIES

Form	Liquid
Buffer	10mM NaH ₂ PO ₄ , 150mM NaCl, 0.1% Gelatin
Preservative	0.09% Sodium azide
Storage	Store as concentrated solution. Centrifuge briefly prior to opening vial. Store at 4°C. DO NOT FREEZE. Protect from light.
Concentration	0.1 mg/ml (Please refer to the vial label for the specific concentration.)
Immunogen	human thymocytes followed by Sezary T cells
Purification	Purified by affinity chromatography From tissue culture supernatant
Conjugation	Peridinin-chlorophyll proteins-Cyanine5.5 (PerCP-Cy5.5)

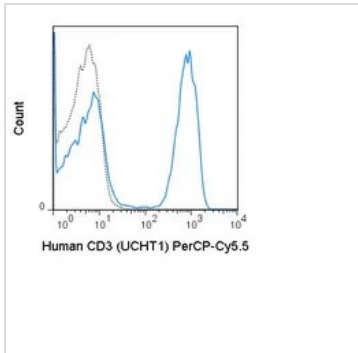


For full product information, images and publications, please visit our [website](#).

For laboratory research use only. Not for any clinical, therapeutic, or diagnostic use in humans or animals. Not for animal or human consumption.

Note

Purchasers shall not, and agree not to enable third parties to, analyze, copy, reverse engineer or otherwise attempt to determine the structure or sequence of the product.

DATA IMAGES

GTX00598-11 FACS Image

FACS analysis of human peripheral blood lymphocytes using GTX00598-11 CD3 epsilon antibody [UCHT1] (PerCP-Cy5.5).

Solid line : Primary antibody

Dashed line : PerCP-Cy5.5 mouse IgG1 isotype control

Antibody amount : 0.5 μ g



For full product information, images and publications, please visit our [website](#).