

Mouse IgG1 isotype control [MOPC-21] (Biotin)

Cat. No. GTX00612-02

Host	Mouse
Clonality	Monoclonal
Isotype	IgG1
Application	FACS

Package
100 µg

APPLICATION

Application Note

*Optimal dilutions/concentrations should be determined by the researcher.

Suggested dilution	Recommended dilution
FACS	Assay dependent

Not tested in other applications.

Product Note

This mouse IgG1 kappa monoclonal antibody (clone MOPC-21) with unknown specificity has been confirmed as a good negative control with human and rat species, based on multiple testing on rat and human tissues. We do not recommend use of this product for Human,Rat samples.

PROPERTIES

Form	Liquid
Buffer	PBS
Preservative	15mM Sodium azide
Storage	Store as concentrated solution. Centrifuge briefly prior to opening vial. Store at 4°C. DO NOT FREEZE.
Concentration	Batch dependent (Please refer to the vial label for the specific concentration.)
Purification	Purified IgG
Conjugation	Biotin The reagent is free of unconjugated biotin.

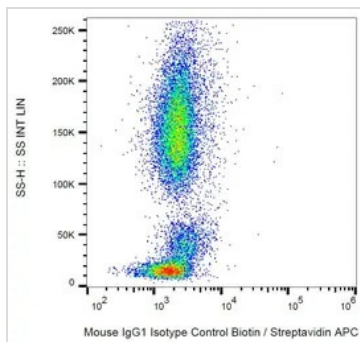
Note

For laboratory research use only. Not for any clinical, therapeutic, or diagnostic use in humans or animals. Not for animal or human consumption.

Purchasers shall not, and agree not to enable third parties to, analyze, copy, reverse engineer or otherwise attempt to determine the structure or sequence of the product.



For full product information, images and publications, please visit our [website](#).

DATA IMAGES

GTx00612-02 FACS Image

FACS analysis of human peripheral blood using GTx00612-02 Mouse IgG1 isotype control [MOPC-21] (Biotin).

Diultion : 6µg/ml



For full product information, images and publications, please visit our [website](#).