

RyR2 (phospho Ser2808) antibody

Cat. No. GTX00625

Host	Rabbit
Clonality	Polyclonal
Isotype	IgG
Application	WB, IHC-P, ELISA
Reactivity	Human, Mouse

Package
100 µl

APPLICATION

Application Note

*Optimal dilutions/concentrations should be determined by the researcher.

Suggested dilution	Recommended dilution
WB	1:500-1:2000
IHC-P	1:50-1:200
ELISA	Assay dependent

Not tested in other applications.

Calculated MW 565 kDa. ([Note](#))

PROPERTIES

Form	Liquid
Buffer	PBS, 150mM NaCl, 50% Glycerol
Preservative	0.02% Sodium azide
Storage	Store as concentrated solution. Centrifuge briefly prior to opening vial. For short-term storage (1-2 weeks), store at 4°C. For long-term storage, aliquot and store at -20°C or below. Avoid multiple freeze-thaw cycles.
Concentration	1 mg/ml (Please refer to the vial label for the specific concentration.)
Immunogen	A synthesized peptide derived from human RYR2 around the phosphorylation site of Ser2808.
Purification	Purified by sequential chromatography on phospho-peptide and non-phospho-peptide columns
Conjugation	Unconjugated

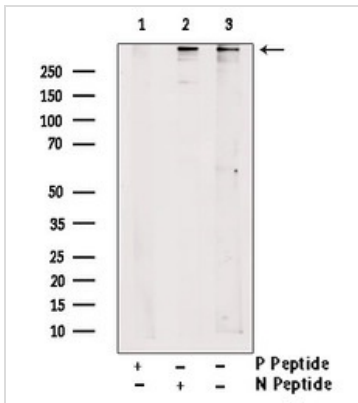
Note

For laboratory research use only. Not for any clinical, therapeutic, or diagnostic use in humans or animals. Not for animal or human consumption.

Purchasers shall not, and agree not to enable third parties to, analyze, copy, reverse engineer or otherwise attempt to determine the structure or sequence of the product.



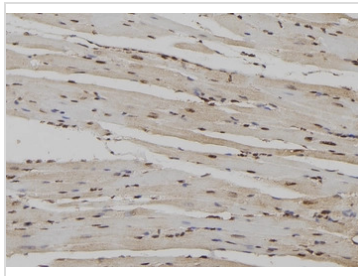
For full product information, images and publications, please visit our [website](#).

DATA IMAGES

GTX00625 WB Image

WB analysis of A431 cell lysate using GTX00625 RyR2 (phospho Ser2808) antibody.

Lane 1 : Primary antibody prior incubate with phospho-blocking peptide

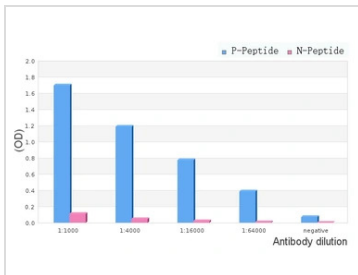
Lane 2 : Primary antibody prior incubate with non-phospho-blocking peptide


GTX00625 IHC-P Image

IHC-P analysis of mouse heart tissue section using GTX00625 RyR2 (phospho Ser2808) antibody.

Antigen retrieval : Heat mediated antigen retrieval step in citrate buffer

Dilution : 1:100

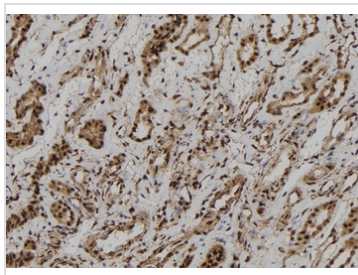

GTX00625 ELISA Image

ELISA analysis of RyR2 phospho- and non-phospho peptide using GTX00625 RyR2 (phospho Ser2808) antibody.

P-peptide: phospho-peptide

N-peptide: non-phospho-peptide

Peptides concentration : 1µg/ml


GTX00625 IHC-P Image

IHC-P analysis of human kidney tissue section using GTX00625 RyR2 (phospho Ser2808) antibody.

Antigen retrieval : Heat mediated antigen retrieval step in citrate buffer

Dilution : 1:100



For full product information, images and publications, please visit our [website](https://www.genetex.com).