

## RyR2 (phospho Ser2814) antibody

Cat. No. GTX00626

<b>Host</b>	Rabbit
<b>Clonality</b>	Polyclonal
<b>Isotype</b>	IgG
<b>Applications</b>	WB, IHC-P, ELISA
<b>Reactivity</b>	Human

References ( 1 )  
 Package  
 100 µl

## Applications

## Application Note

\*Optimal dilutions/concentrations should be determined by the researcher.

Suggested dilution	Recommended dilution
WB	1:500-1:2000
IHC-P	1:50-1:200
ELISA	Assay dependent

Not tested in other applications.

**Calculated MW** 565 kDa. ([Note](#))

## Properties

<b>Form</b>	Liquid
<b>Buffer</b>	PBS, 150mM NaCl, 50% Glycerol
<b>Preservative</b>	0.02% Sodium azide
<b>Storage</b>	Store as concentrated solution. Centrifuge briefly prior to opening vial. For short-term storage (1-2 weeks), store at 4°C. For long-term storage, aliquot and store at -20°C or below. Avoid multiple freeze-thaw cycles.
<b>Concentration</b>	1 mg/ml (Please refer to the vial label for the specific concentration.)
<b>Immunogen</b>	A synthesized peptide derived from human RYR2 around the phosphorylation site of Ser2814.
<b>Purification</b>	Purified by sequential chromatography on phospho-peptide and non-phospho-peptide columns
<b>Conjugation</b>	Unconjugated

## Note

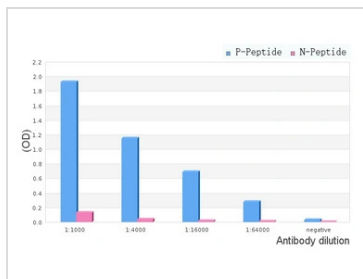
For laboratory research use only. Not for any clinical, therapeutic, or diagnostic use in humans or animals. Not for animal or human consumption.

Purchasers shall not, and agree not to enable third parties to, analyze, copy, reverse engineer or otherwise attempt to determine the structure or sequence of the product.



For full product information, images and publications, please visit our [website](#).

DATA IMAGES



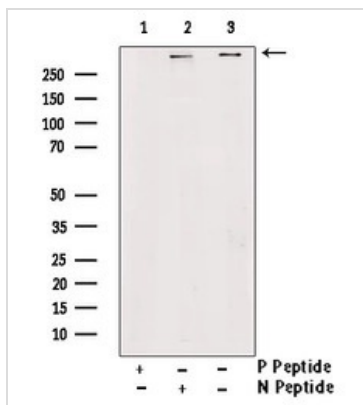
**GTX00626 ELISA Image**

ELISA analysis of RyR2 phospho- and non-phospho peptide using GTX00626 RyR2 (phospho Ser2814) antibody.

P-peptide: phospho-peptide

N-peptide: non-phospho-peptide

Peptides concentration : 1µg/ml

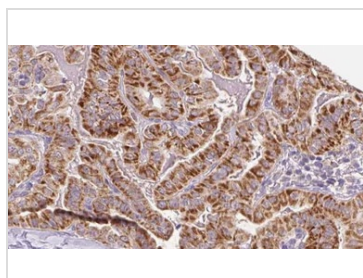


**GTX00626 WB Image**

WB analysis of A431 cell lysate using GTX00626 RyR2 (phospho Ser2814) antibody.

Lane 1 : Primary antibody prior incubate with phospho-blocking peptide

Lane 2 : Primary antibody prior incubate with non-phospho-blocking peptide



**GTX00626 IHC-P Image**

IHC-P analysis of human thyroid cancer tissue using GTX00626 RyR2 (phospho Ser2814) antibody.

Antigen retrieval : Heat mediated antigen retrieval step in citrate buffer

Dilution : 1:100



For full product information, images and publications, please visit our [website](#).