

KCNN4 antibody [6C1]

Cat. No. GTX00627

Host	Mouse
Clonality	Monoclonal
Isotype	IgM
Application	WB, ICC/IF, FACS, IP, IHC, LCI
Reactivity	Human, Mouse, Rat

Package

50 µg

APPLICATION

Application Note

*Optimal dilutions/concentrations should be determined by the researcher.

Suggested dilution	Recommended dilution
WB	Assay dependent
ICC/IF	Assay dependent
FACS	Assay dependent
IP	Assay dependent
IHC	Assay dependent
LCI	Assay dependent

Not tested in other applications.

Calculated MW 48 kDa. ([Note](#))

PROPERTIES

Form	Liquid
Buffer	PBS, 1% BSA
Preservative	0.05% Sodium azide
Storage	Store as concentrated solution. Centrifuge briefly prior to opening vial. For short-term storage (1-2 weeks), store at 4°C. For long-term storage, aliquot and store at -20°C or below. Avoid multiple freeze-thaw cycles.
Concentration	1 mg/ml (Please refer to the vial label for the specific concentration.)
Immunogen	Synthetic peptide mapping to the 3rd extracellular loop of human KCNN4 (Accession O15554).
Purification	Purified by affinity chromatography From tissue culture supernatant
Conjugation	Unconjugated

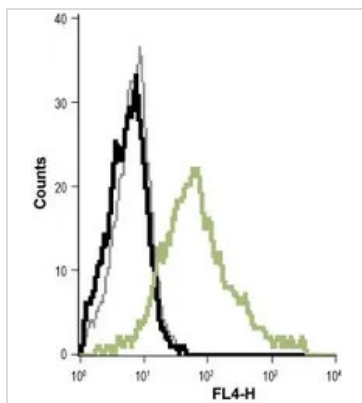


For full product information, images and publications, please visit our [website](#).

For laboratory research use only. Not for any clinical, therapeutic, or diagnostic use in humans or animals. Not for animal or human consumption.

Note

Purchasers shall not, and agree not to enable third parties to, analyze, copy, reverse engineer or otherwise attempt to determine the structure or sequence of the product.

DATA IMAGES

GTX00627 FACS Image

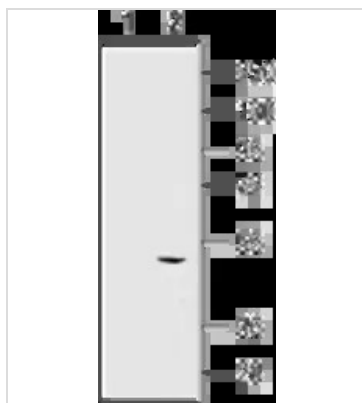
FACS analysis of THP-1 cells using GTX00627 KCNN4 antibody [6C1].

Black : Negative control

Gray : Isotype control

Green : Primary antibody

Dilution : 1:20

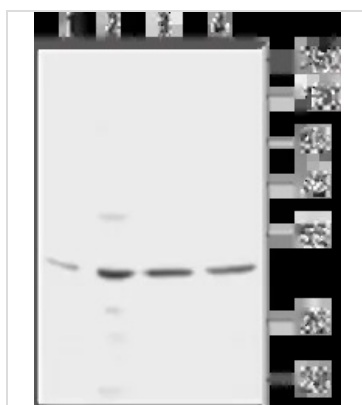

GTX00627 WB Image

WB analysis of HEK cells transfected with human KCNN4 using GTX00627 KCNN4 antibody [6C1].

Lane 1 : HEK cells transfected with control vector

Lane 2 : HEK cells transfected with human KCa3.1

Dilution : 1:250


GTX00627 WB Image

WB analysis of various samples using GTX00627 KCNN4 antibody [6C1].

Lane 1 : MS1 cell lysate

Lane 2 : IEC-6 cell lysate

Lane 3 : LN-CaP cell lysate

Lane 4 : THP-1 cell lysate

Dilution : 1:250



For full product information, images and publications, please visit our [website](https://www.genetex.com).