

## Hepatitis B virus Surface Antigen antibody

**Cat. No. GTX00629**

<b>Host</b>	Goat
<b>Clonality</b>	Polyclonal
<b>Isotype</b>	IgG
<b>Applications</b>	WB, ICC/IF, IHC-P, ELISA
<b>Reactivity</b>	Hepatitis B virus

**Package**  
100 µl

## Applications

**Application Note**

\*Optimal dilutions/concentrations should be determined by the researcher.

Suggested dilution	Recommended dilution
WB	1:300-1000
ICC/IF	Assay dependent
IHC-P	1:200-400
ELISA	Assay dependent

Not tested in other applications.

## Properties

<b>Form</b>	Liquid
<b>Buffer</b>	PBS
<b>Preservative</b>	0.02% Proclin300
<b>Storage</b>	Store as concentrated solution. Centrifuge briefly prior to opening vial. For short-term storage (1-2 weeks), store at 4°C. For long-term storage, aliquot and store at -20°C or below. Avoid multiple freeze-thaw cycles.
<b>Concentration</b>	1 mg/ml (Please refer to the vial label for the specific concentration.)
<b>Immunogen</b>	Human Hepatitis B Surface Antigen
<b>Purification</b>	Protein G purified
<b>Conjugation</b>	Unconjugated

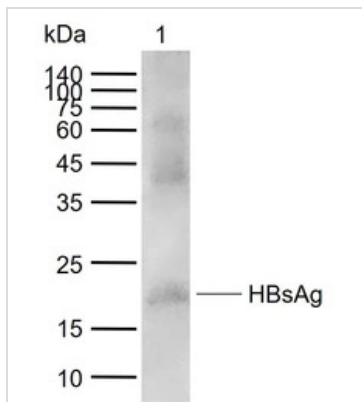
**Note**

For laboratory research use only. Not for any clinical, therapeutic, or diagnostic use in humans or animals. Not for animal or human consumption.

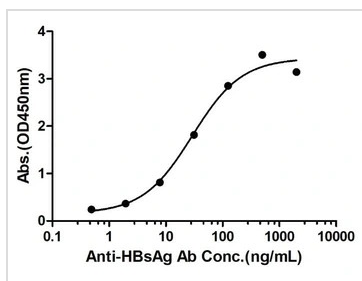
Purchasers shall not, and agree not to enable third parties to, analyze, copy, reverse engineer or otherwise attempt to determine the structure or sequence of the product.



For full product information, images and publications, please visit our [website](#).

**DATA IMAGES**

**GTX00629 WB Image**

WB analysis of recombinant HBsAg protein using GTX00629 Hepatitis B virus Surface Antigen antibody.  
Dilution : 1:1000


**GTX00629 ELISA Image**

ELISA analysis of recombinant full-length adr serotype HBsAg protein (tag-free; Uniprot #Q81157) using serially diluted GTX00629 Hepatitis B virus Surface Antigen antibody.



For full product information, images and publications, please visit our [website](#).