

# PTHLH antibody

**Cat. No. GTX00631**

<b>Host</b>	Rabbit
<b>Clonality</b>	Polyclonal
<b>Isotype</b>	IgG
<b>Applications</b>	WB, IHC-P
<b>Reactivity</b>	Human, Mouse, Rat

**Package**  
100 µl

## Applications

### Application Note

\*Optimal dilutions/concentrations should be determined by the researcher.

Suggested dilution	Recommended dilution
WB	Assay dependent
IHC-P	Assay dependent

Not tested in other applications.

**Calculated MW** 20 kDa. ( [Note](#) )

## Properties

<b>Form</b>	Liquid
<b>Buffer</b>	PBS, 2% Sucrose
<b>Preservative</b>	0.09% Sodium azide
<b>Storage</b>	Store as concentrated solution. Centrifuge briefly prior to opening vial. For short-term storage (1-2 weeks), store at 4°C. For long-term storage, aliquot and store at -20°C or below. Avoid multiple freeze-thaw cycles.
<b>Concentration</b>	0.5-1 mg/ml (Please refer to the vial label for the specific concentration.)
<b>Immunogen</b>	The immunogen is a synthetic peptide directed towards the middle region of human PTHLH
<b>Purification</b>	Protein A purified
<b>Conjugation</b>	Unconjugated

### Note

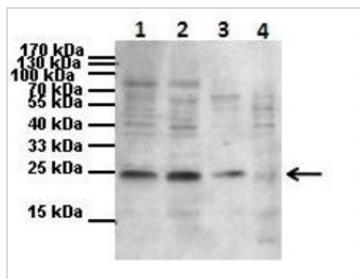
For laboratory research use only. Not for any clinical, therapeutic, or diagnostic use in humans or animals. Not for animal or human consumption.

Purchasers shall not, and agree not to enable third parties to, analyze, copy, reverse engineer or otherwise attempt to determine the structure or sequence of the product.



For full product information, images and publications, please visit our [website](#).

## DATA IMAGES

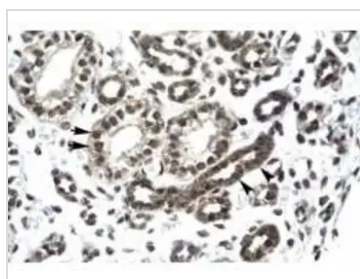


### GTx00631 WB Image

WB analysis of HK-2, MC3T3-E1, MLO-Y4 and rat Walker tumor extract using GTx00631 PTHLH antibody.

Dilution : 1:1000

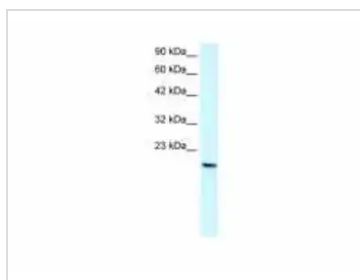
Loading : 30-40µg



### GTx00631 IHC-P Image

IHC-P analysis of human kidney tissue using GTx00631 PTHLH antibody.

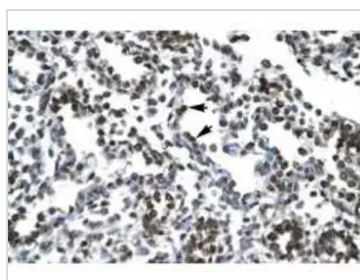
Dilution : 4.0-8.0 µg/ml



### GTx00631 WB Image

WB analysis of HepG2 cell lysate using GTx00631 PTHLH antibody.

Dilution : 2 µg/ml



### GTx00631 IHC-P Image

IHC-P analysis human lung tissue using GTx00631 PTHLH antibody.

Dilution : 4.0-8.0 µg/ml



For full product information, images and publications, please visit our [website](https://www.genetex.com).