

## Integrin alpha 1 antibody

Cat. No. GTX00650

Host	Rabbit
Clonality	Polyclonal
Isotype	IgG
Applications	WB, IHC-P
Reactivity	Human, Mouse, Rat

Package  
100 µg

## Applications

## Application Note

\*Optimal dilutions/concentrations should be determined by the researcher.

Suggested dilution	Recommended dilution
WB	0.1-0.5µg/ml
IHC-P	0.5-1µg/ml

Not tested in other applications.

Calculated MW 131 kDa. ([Note](#))

## Properties

Form	Liquid
Buffer	5mg BSA, 0.9mg NaCl, 0.2mg Na <sub>2</sub> HPO <sub>4</sub>
Preservative	0.05mg Thimerosal, 0.05mg Sodium azide
Storage	Store as concentrated solution. Centrifuge briefly prior to opening vial. For short-term storage (1-2 weeks), store at 4°C. For long-term storage, aliquot and store at -20°C or below. Avoid multiple freeze-thaw cycles.
Concentration	0.5 mg/ml (Please refer to the vial label for the specific concentration.)
Immunogen	A synthetic peptide corresponding to a sequence at the C-terminus of human Integrin alpha 1(1121-1134aa SNQKRELAIQISKD).
Purification	Purified by affinity chromatography
Conjugation	Unconjugated

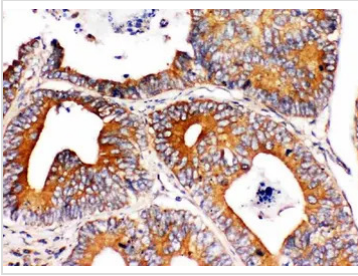
## Note

For laboratory research use only. Not for any clinical, therapeutic, or diagnostic use in humans or animals. Not for animal or human consumption.

Purchasers shall not, and agree not to enable third parties to, analyze, copy, reverse engineer or otherwise attempt to determine the structure or sequence of the product.

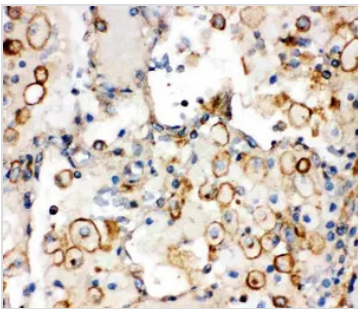
For full product information, images and publications, please visit our [website](#).

## DATA IMAGES



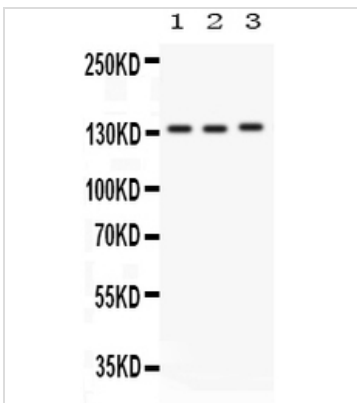
### GTX00650 IHC-P Image

IHC-P analysis of human intestinal cancer tissue using GTX00650 Integrin alpha 1 antibody.



### GTX00650 IHC-P Image

IHC-P analysis of human lung cancer tissue using GTX00650 Integrin alpha 1 antibody.



### GTX00650 WB Image

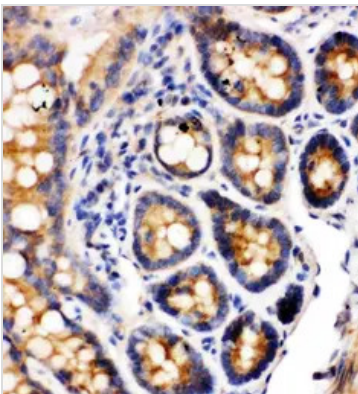
WB analysis of various samples using GTX00650 Integrin alpha 1 antibody.

Lane 1: rat brain tissue lysate (50µg)

Lane 2 : HeLa whole cell lysate (40µg)

Lane 3 : SW620 whole cell lysate (40µg)

Dilution : 0.5 µg/ml



### GTX00650 IHC-P Image

IHC-P analysis of rat intestine tissue using GTX00650 Integrin alpha 1 antibody.



For full product information, images and publications, please visit our [website](https://www.genetex.com).