

# Nociceptin antibody

**Cat. No. GTX00663**

<b>Host</b>	Rabbit
<b>Clonality</b>	Polyclonal
<b>Isotype</b>	IgG
<b>Applications</b>	WB, IHC-P
<b>Reactivity</b>	Rat

**Package**  
100 µl

## Applications

### Application Note

\*Optimal dilutions/concentrations should be determined by the researcher.

Suggested dilution	Recommended dilution
WB	1:300-1:1000
IHC-P	1:200-1:400

Not tested in other applications.

**Calculated MW** 20 kDa. ( [Note](#) )

## Properties

<b>Form</b>	Liquid
<b>Buffer</b>	1% BSA, 50% Glycerol
<b>Preservative</b>	0.09% Sodium azide
<b>Storage</b>	Store as concentrated solution. Centrifuge briefly prior to opening vial. For short-term storage (1-2 weeks), store at 4°C. For long-term storage, aliquot and store at -20°C or below. Avoid multiple freeze-thaw cycles.
<b>Concentration</b>	1 mg/ml (Please refer to the vial label for the specific concentration.)
<b>Immunogen</b>	KLH conjugated synthetic peptide derived from human Nociceptin (a.a.130-142).
<b>Purification</b>	Protein A purified
<b>Conjugation</b>	Unconjugated

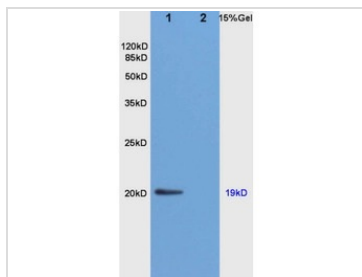
### Note

For laboratory research use only. Not for any clinical, therapeutic, or diagnostic use in humans or animals. Not for animal or human consumption.

Purchasers shall not, and agree not to enable third parties to, analyze, copy, reverse engineer or otherwise attempt to determine the structure or sequence of the product.



For full product information, images and publications, please visit our [website](#).

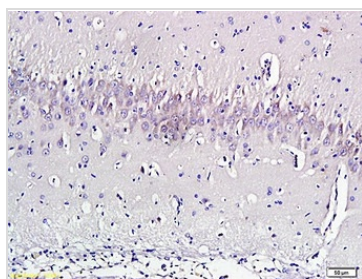
**DATA IMAGES**

**GTX00663 WB Image**

WB analysis of various samples using GTX00663 Nociceptin antibody.

Lane 1 : rat brain

Lane 2 : rat liver

Dilution : 1:200


**GTX00663 IHC-P Image**

IHC-P analysis of rat brain tissue using GTX00663 Nociceptin antibody.

Dilution : 1:300



For full product information, images and publications, please visit our [website](https://www.genetex.com).